

# NOX1 Rabbit Polyclonal Antibody



CAB11966

---

## Product Information

### Size:

20uL, 50uL, 100uL, 200uL

### Observed MW:

Refer to figures

### Calculated MW:

21kDa/58kDa/64kDa

### Applications:

IHC

### Reactivity:

Human, Rat

## Protein Background

This gene encodes a member of the NADPH oxidase family of enzymes responsible for the catalytic one-electron transfer of oxygen to generate superoxide or hydrogen peroxide. Alternatively spliced transcript variants encoding multiple isoforms have been observed for this gene.

## Immunogen information

### Gene ID:

27035

### Uniprot

Q9Y5S8

### Synonyms:

NOX1; GP91-2; MOX1; NOH-1; NOH1

## Antibody Information

### Recommended dilutions:

IHC 1:50 - 1:200

### Source:

Rabbit

### Isotype:

IgG

### Purification:

Affinity purification

### Immunogen:

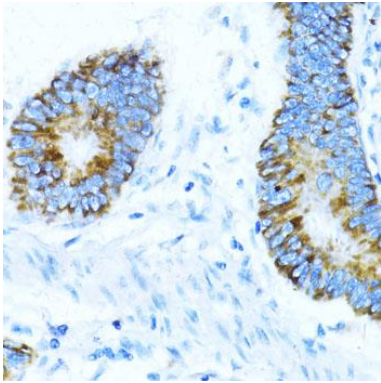
A synthetic peptide corresponding to a sequence within amino acids 200-300 of human NOX1 (NP\_008983.2).

### Storage:

Store at -20°C. Avoid freeze / thaw cycles. Buffer: PBS with 0.02% sodium azide, 50% glycerol, pH7.3.

## Product Images

---



Immunohistochemistry of paraffin-embedded human colon carcinoma using NOX1 antibody (CAB11966) at dilution of 1:100 (40x lens).