

# FCGR1A Rabbit Polyclonal Antibody



CAB1197

---

## Product Information

### Size:

20uL, 50uL, 100uL, 200uL

### Observed MW:

70-80kDa

### Calculated MW:

38kDa/42kDa

### Applications:

WB IHC

### Reactivity:

Human, Mouse, Rat

## Protein Background

This gene encodes a protein that plays an important role in the immune response. This protein is a high-affinity Fc-gamma receptor. The gene is one of three related gene family members located on chromosome 1.

## Immunogen information

### Gene ID:

2209

### Uniprot

P12314

### Synonyms:

FCGR1A; CD64; CD64A; FCRI; IGFR1

## Antibody Information

### Recommended dilutions:

WB 1:500 - 1:2000 IHC 1:50  
- 1:100

### Source:

Rabbit

### Isotype:

IgG

### Purification:

Affinity purification

### Immunogen:

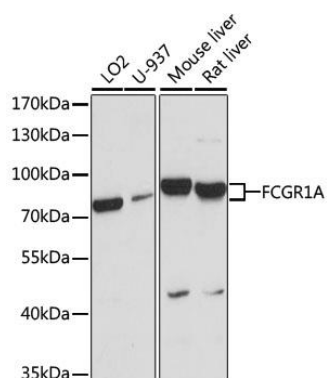
Recombinant fusion protein containing a sequence corresponding to amino acids 200-292 of human FCGR1A (NP\_000557.1).

### Storage:

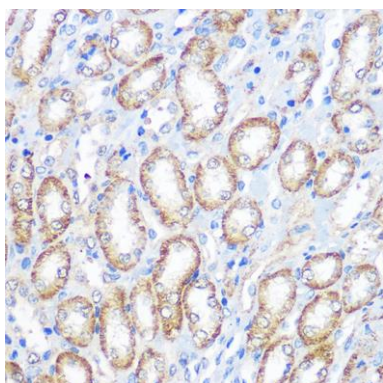
Store at -20°C. Avoid freeze / thaw cycles. Buffer: PBS with 0.02% sodium azide, 50% glycerol, pH7.3.

## Product Images

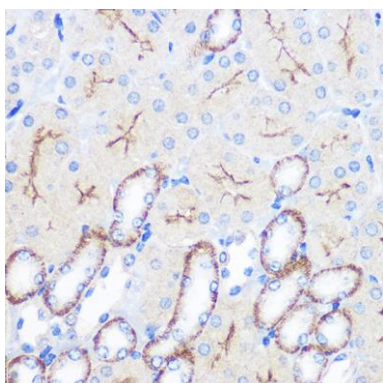
---



Western blot analysis of extracts of various cell lines, using FCGR1A antibody (CAB1197) at 1:1000 dilution. Secondary antibody: HRP Goat Anti-Rabbit IgG (H+L) (CABS014) at 1:10000 dilution. Lysates/proteins: 25ug per lane. Blocking buffer: 3% nonfat dry milk in TBST. Detection: ECL Basic Kit (CABM00020). Exposure time: 60s.



Immunohistochemistry of paraffin-embedded rat kidney using FCGR1A Rabbit pAb (CAB1197) at dilution of 1:100 (40x lens).



Immunohistochemistry of paraffin-embedded mouse kidney using FCGR1A Rabbit pAb (CAB1197) at dilution of 1:100 (40x lens).