

# PD-1 Rabbit Polyclonal Antibody



CAB11973

## Product Information

### Size:

20uL, 50uL, 100uL, 200uL

### Observed MW:

40-70kDa

### Calculated MW:

31kDa

### Applications:

WB IHC IF

### Reactivity:

Human, Mouse, Rat

## Protein Background

This gene encodes a cell surface membrane protein of the immunoglobulin superfamily. This protein is expressed in pro-B-cells and is thought to play a role in their differentiation. In mice, expression of this gene is induced in the thymus when anti-CD3 antibodies are injected and large numbers of thymocytes undergo apoptosis. Mice deficient for this gene bred on a BALB/c background developed dilated cardiomyopathy and died from congestive heart failure. These studies suggest that this gene product may also be important in T cell function and contribute to the prevention of autoimmune diseases.

## Immunogen information

### Gene ID:

5133

### Uniprot

Q15116

### Synonyms:

PDCD1; CD279; PD-1; PD1; SLEB2; hPD-1; hPD-I; hSLE1

## Antibody Information

### Recommended dilutions:

WB 1:500 - 1:2000 IHC 1:50  
- 1:200 IF 1:50 - 1:200

### Source:

Rabbit

### Isotype:

IgG

### Purification:

Affinity purification

### Immunogen:

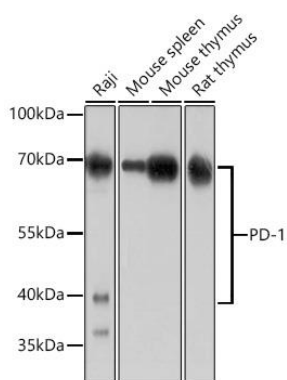
A synthetic peptide corresponding to a sequence within amino acids 1-100 of human PD-1 (NP\_005009.2).

### Storage:

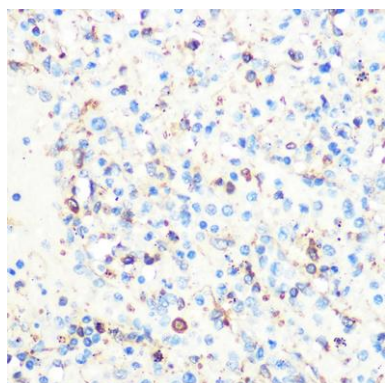
Store at -20°C. Avoid freeze / thaw cycles. Buffer: PBS with 0.02% sodium azide, 50% glycerol, pH7.3.

## Product Images

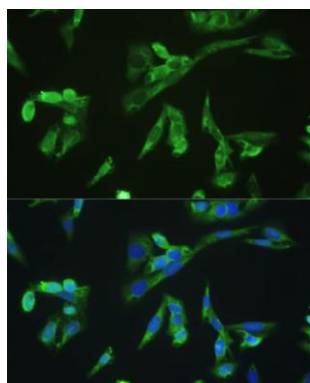
---



Western blot analysis of extracts of various cell lines, using PD-1 antibody (CAB11973) at 1:1000 dilution. Secondary antibody: HRP Goat Anti-Rabbit IgG (H+L) (CABS014) at 1:10000 dilution. Lysates/proteins: 25ug per lane. Blocking buffer: 3% nonfat dry milk in TBST. Detection: ECL Enhanced Kit (CABM00021). Exposure time: 3min.



Immunohistochemistry of paraffin-embedded human spleen using PD-1 Rabbit pAb (CAB11973) at dilution of 1:100 (40x lens).



Immunofluorescence analysis of U2OS cells using PD-1 antibody (CAB11973) at dilution of 1:100. Blue: DAPI for nuclear staining.