

# ABCC5 Rabbit Polyclonal Antibody



CAB11978

## Product Information

### Size:

20uL, 50uL, 100uL, 200uL

### Observed MW:

161kDa

### Calculated MW:

23kDa/25kDa/155kDa/160kDa

### Applications:

WB IHC

### Reactivity:

Human, Rat

## Antibody Information

### Recommended dilutions:

WB 1:500 - 1:2000 IHC 1:50 - 1:200

### Source:

Rabbit

### Isotype:

IgG

### Purification:

Affinity purification

## Protein Background

The protein encoded by this gene is a member of the superfamily of ATP-binding cassette (ABC) transporters. ABC proteins transport various molecules across extra- and intra-cellular membranes. ABC genes are divided into seven distinct subfamilies (ABC1, MDR/TAP, MRP, ALD, OABP, GCN20, White). This protein is a member of the MRP subfamily which is involved in multi-drug resistance. This protein functions in the cellular export of its substrate, cyclic nucleotides. This export contributes to the degradation of phosphodiesterases and possibly an elimination pathway for cyclic nucleotides. Studies show that this protein provides resistance to thiopurine anticancer drugs, 6-mercaptopurine and thioguanine, and the anti-HIV drug 9-(2-phosphonylmethoxyethyl)adenine. This protein may be involved in resistance to thiopurines in acute lymphoblastic leukemia and antiretroviral nucleoside analogs in HIV-infected patients. Alternative splicing results in multiple transcript variants.

## Immunogen information

### Gene ID:

10057

### Uniprot

O15440

### Synonyms:

ABCC5; ABC33; EST277145; MOAT-C; MOATC; MRP5; SMRP; pABC11

### Immunogen:

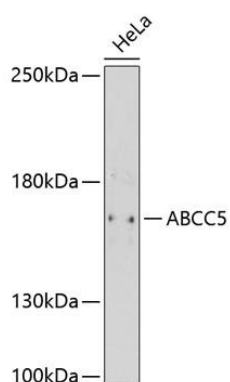
A synthetic peptide corresponding to a sequence within amino acids 1-100 of human ABCC5 (NP\_005679.2).

### Storage:

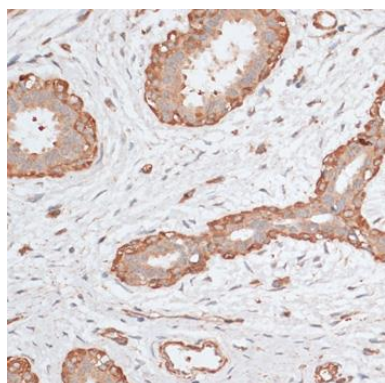
Store at -20°C. Avoid freeze / thaw cycles. Buffer: PBS with 0.02% sodium azide, 50% glycerol, pH7.3.

## Product Images

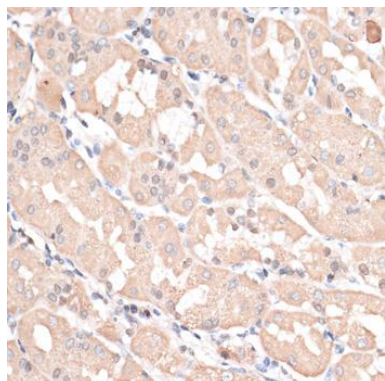
---



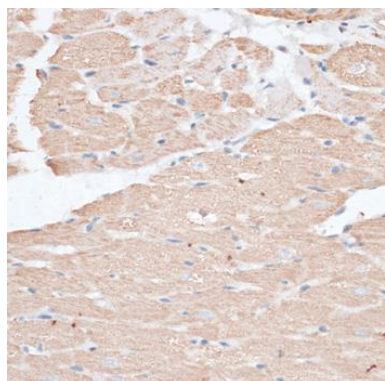
Western blot analysis of extracts of HeLa cells, using ABCC5 antibody (CAB11978) at 1:1000 dilution. Secondary antibody: HRP Goat Anti-Rabbit IgG (H+L) (CABS014) at 1:10000 dilution. Lysates/proteins: 25ug per lane. Blocking buffer: 3% nonfat dry milk in TBST. Detection: ECL Enhanced Kit (CABM00021). Exposure time: 90s.



Immunohistochemistry of paraffin-embedded human breast cancer using ABCC5 antibody (CAB11978) at dilution of 1:100 (40x lens).



Immunohistochemistry of paraffin-embedded human stomach using ABCC5 antibody (CAB11978) at dilution of 1:100 (40x lens).



Immunohistochemistry of paraffin-embedded rat heart using ABCC5 antibody (CAB11978) at dilution of 1:100 (40x lens).