

# CCL26 Rabbit Polyclonal Antibody



CAB11980

## Product Information

### Size:

20uL, 50uL, 100uL, 200uL

### Observed MW:

### Calculated MW:

10kDa

### Applications:

IF

### Reactivity:

Human

## Antibody Information

### Recommended dilutions:

IF 1:50 - 1:200

### Source:

Rabbit

### Isotype:

IgG

### Purification:

Affinity purification

## Protein Background

This gene is one of two Cys-Cys (CC) cytokine genes clustered on the q arm of chromosome 7. Cytokines are a family of secreted proteins involved in immunoregulatory and inflammatory processes. The CC cytokines are proteins characterized by two adjacent cysteines. The cytokine encoded by this gene displays chemotactic activity for normal peripheral blood eosinophils and basophils. The product of this gene is one of three related chemokines that specifically activate chemokine receptor CCR3. This chemokine may contribute to the eosinophil accumulation in atopic diseases.

## Immunogen information

### Gene ID:

10344

### Uniprot

Q9Y258

### Synonyms:

CCL26; IMAC; MIP-4a; MIP-4alpha; SCYA26; TSC-1

### Immunogen:

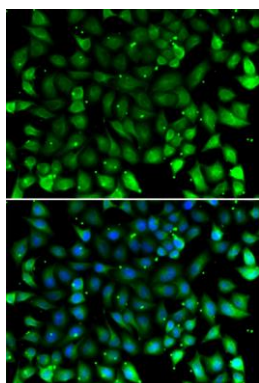
Recombinant fusion protein containing a sequence corresponding to amino acids 24-94 of human CCL26 (NP\_006063.1).

### Storage:

Store at -20°C. Avoid freeze / thaw cycles. Buffer: PBS with 0.02% sodium azide, 50% glycerol, pH7.3.

## Product Images

---



Immunofluorescence analysis of A549 cells using CCL26 antibody (CAB11980). Blue: DAPI for nuclear staining.