

# MBD2 Rabbit Polyclonal Antibody



CAB11982

---

## Product Information

### Size:

20uL, 50uL, 100uL, 200uL

### Observed MW:

43kDa

### Calculated MW:

31kDa/43kDa

### Applications:

WB

### Reactivity:

Human, Mouse, Rat

## Protein Background

DNA methylation is the major modification of eukaryotic genomes and plays an essential role in mammalian development. Human proteins MECP2, MBD1, MBD2, MBD3, and MBD4 comprise a family of nuclear proteins related by the presence in each of a methyl-CpG binding domain (MBD). Each of these proteins, with the exception of MBD3, is capable of binding specifically to methylated DNA. MECP2, MBD1 and MBD2 can also repress transcription from methylated gene promoters. The protein encoded by this gene may function as a mediator of the biological consequences of the methylation signal. It is also reported that the this protein functions as a demethylase to activate transcription, as DNA methylation causes gene silencing. Two transcript variants encoding different isoforms have been found for this gene.

## Immunogen information

### Gene ID:

8932

### Uniprot

Q9UBB5

## Antibody Information

### Recommended dilutions:

WB 1:500 - 1:2000

### Source:

Rabbit

### Isotype:

IgG

### Purification:

Affinity purification

### Synonyms:

MBD2; DMTase; NY-CO-41

### Immunogen:

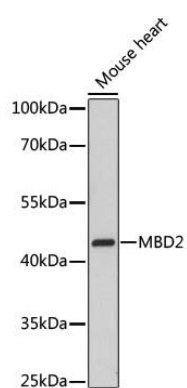
A synthetic peptide corresponding to a sequence within amino acids 300 to the C-terminus of human MBD2 (NP\_003918.1).

### Storage:

Store at -20°C. Avoid freeze / thaw cycles. Buffer: PBS with 0.02% sodium azide, 50% glycerol, pH7.3.

## Product Images

---



Western blot - MBD2 Rabbit pAb (CAB11982)