

# FGF10 Rabbit Polyclonal Antibody



CAB1201

## Product Information

### Size:

20uL, 50uL, 100uL, 200uL

### Observed MW:

27KDa

### Calculated MW:

23kDa

### Applications:

WB IHC

### Reactivity:

Human, Mouse, Rat

## Antibody Information

### Recommended dilutions:

WB 1:500 - 1:2000 IHC 1:50  
- 1:200

### Source:

Rabbit

### Isotype:

IgG

### Purification:

Affinity purification

## Protein Background

The protein encoded by this gene is a member of the fibroblast growth factor (FGF) family. FGF family members possess broad mitogenic and cell survival activities, and are involved in a variety of biological processes, including embryonic development, cell growth, morphogenesis, tissue repair, tumor growth and invasion. This protein exhibits mitogenic activity for keratinizing epidermal cells, but essentially no activity for fibroblasts, which is similar to the biological activity of FGF7. Studies of the mouse homolog of suggested that this gene is required for embryonic epidermal morphogenesis including brain development, lung morphogenesis, and initiation of limb bud formation. This gene is also implicated to be a primary factor in the process of wound healing.

## Immunogen information

### Gene ID:

2255

### Uniprot

O15520

### Synonyms:

FGF10

### Immunogen:

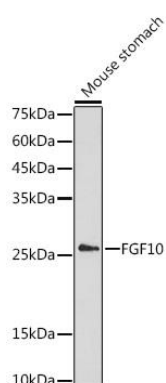
Recombinant fusion protein containing a sequence corresponding to amino acids 40-208 of human FGF10 (NP\_004456.1).

### Storage:

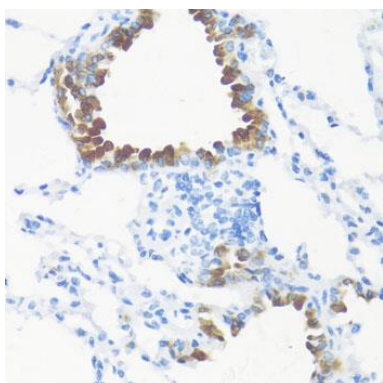
Store at -20°C. Avoid freeze / thaw cycles. Buffer: PBS with 0.02% sodium azide, 50% glycerol, pH7.3.

## Product Images

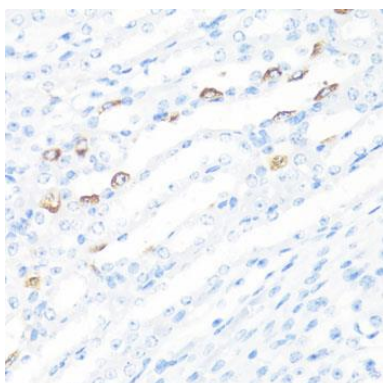
---



Western blot analysis of extracts of Mouse stomach, using FGF10 antibody (CAB1201) at 1:1000 dilution. Secondary antibody: HRP Goat Anti-Rabbit IgG (H+L) (CABS014) at 1:10000 dilution. Lysates/proteins: 25ug per lane. Blocking buffer: 3% nonfat dry milk in TBST. Detection: ECL Enhanced Kit (CABM00021). Exposure time: 180s.



Immunohistochemistry of paraffin-embedded mouse lung using FGF10 antibody (CAB1201) at dilution of 1:100 (40x lens).



Immunohistochemistry of paraffin-embedded mouse kidney using FGF10 antibody (CAB1201) at dilution of 1:100 (40x lens).