

# GLG1 Rabbit Polyclonal Antibody



CAB12024

---

## Product Information

### Size:

20uL, 50uL, 100uL, 200uL

### Observed MW:

135kDa

### Calculated MW:

134kDa/135kDa/137kDa

### Applications:

WB

### Reactivity:

Human, Mouse

## Antibody Information

### Recommended dilutions:

WB 1:500 - 1:1000

### Source:

Rabbit

### Isotype:

IgG

### Purification:

Affinity purification

## Protein Background

### Immunogen information

#### Gene ID:

2734

#### Uniprot

Q92896

#### Synonyms:

GLG1; CFR-1; ESL-1; MG-160; MG160

#### Immunogen:

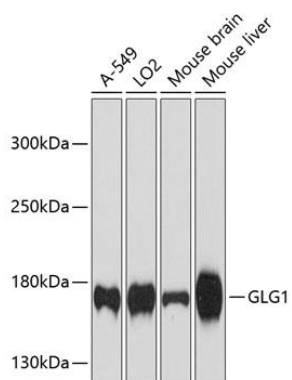
Recombinant fusion protein containing a sequence corresponding to amino acids 974-1203 of human GLG1 (NP\_036333.2).

#### Storage:

Store at -20°C. Avoid freeze / thaw cycles. Buffer: PBS with 0.02% sodium azide, 50% glycerol, pH7.3.

## Product Images

---



Western blot analysis of extracts of various cell lines, using GLG1 antibody (CAB12024) at 1:3000 dilution. Secondary antibody: HRP Goat Anti-Rabbit IgG (H+L) (CABS014) at 1:10000 dilution. Lysates/proteins: 25ug per lane. Blocking buffer: 3% nonfat dry milk in TBST. Detection: ECL Enhanced Kit (CABM00021). Exposure time: 90s.