

KL Rabbit Polyclonal Antibody



CAB12028

Product Information

Size:

20uL, 50uL, 100uL, 200uL

Observed MW:

65kDa, 120kDa

Calculated MW:

62kDa/116kDa

Applications:

WB IHC IF

Reactivity:

Human, Mouse, Rat

Protein Background

This gene encodes a type-I membrane protein that is related to beta-glucosidases. Reduced production of this protein has been observed in patients with chronic renal failure (CRF), and this may be one of the factors underlying the degenerative processes (e.g., arteriosclerosis, osteoporosis, and skin atrophy) seen in CRF. Also, mutations within this protein have been associated with ageing and bone loss.

Immunogen information

Gene ID:

9365

Uniprot

Q9UEF7

Synonyms:

KL; klotho

Antibody Information

Recommended dilutions:

WB 1:500 - 1:2000 IHC 1:50
- 1:200 IF 1:50 - 1:200

Source:

Rabbit

Isotype:

IgG

Purification:

Affinity purification

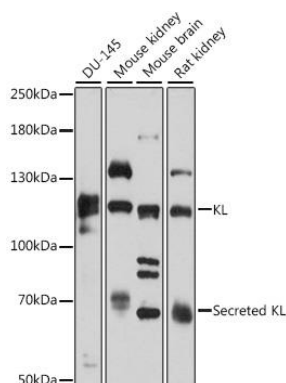
Immunogen:

Recombinant fusion protein containing a sequence corresponding to amino acids 1-200 of human KL (NP_004786.2).

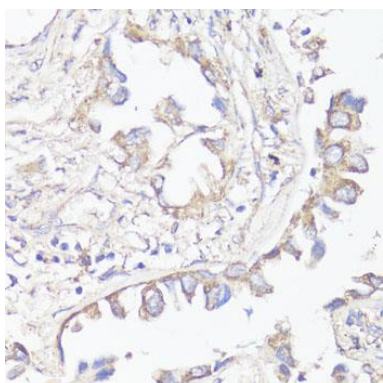
Storage:

Store at -20°C. Avoid freeze / thaw cycles. Buffer: PBS with 0.02% sodium azide, 50% glycerol, pH7.3.

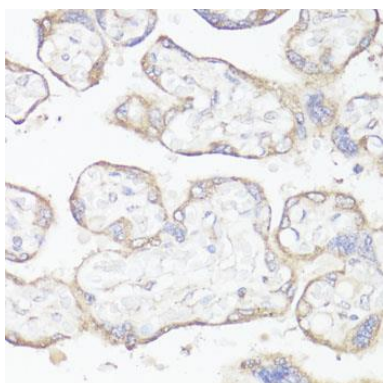
Product Images



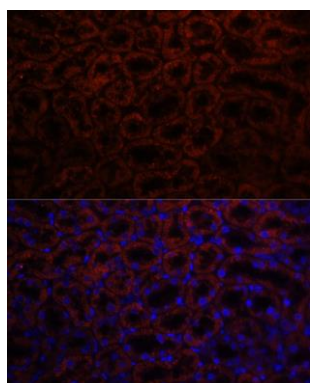
Western blot analysis of extracts of various cell lines, using KL antibody (CAB12028) at 1:3000 dilution. Secondary antibody: HRP Goat Anti-Rabbit IgG (H+L) (CABS014) at 1:10000 dilution. Lysates/proteins: 25ug per lane. Blocking buffer: 3% nonfat dry milk in TBST. Detection: ECL Basic Kit (CABM00020). Exposure time: 5s.



Immunohistochemistry of paraffin-embedded human lung cancer using KL antibody (CAB12028) at dilution of 1:200 (40x lens).



Immunohistochemistry of paraffin-embedded human placenta using KL antibody (CAB12028) at dilution of 1:200 (40x lens).



Immunofluorescence analysis of rat kidney using KL antibody (CAB12028) at dilution of 1:100. Blue: DAPI for nuclear staining.