

# MYH10 Rabbit Polyclonal Antibody



CAB12029

## Product Information

### Size:

20uL, 50uL, 100uL, 200uL

### Observed MW:

250kDa

### Calculated MW:

228kDa/230kDa/231kDa/232kDa

### Applications:

WB IHC

### Reactivity:

Human, Mouse, Rat

## Antibody Information

### Recommended dilutions:

WB 1:500 - 1:2000 IHC 1:50 - 1:200

### Source:

Rabbit

### Isotype:

IgG

### Purification:

Affinity purification

## Protein Background

This gene encodes a member of the myosin superfamily. The protein represents a conventional non-muscle myosin; it should not be confused with the unconventional myosin-10 (MYO10). Myosins are actin-dependent motor proteins with diverse functions including regulation of cytokinesis, cell motility, and cell polarity. Mutations in this gene have been associated with May-Hegglin anomaly and developmental defects in brain and heart. Multiple transcript variants encoding different isoforms have been found for this gene.

## Immunogen information

### Gene ID:

4628

### Uniprot

P35580

### Synonyms:

MYH10; NMMHC-IIB; NMMHCB; myosin-10

### Immunogen:

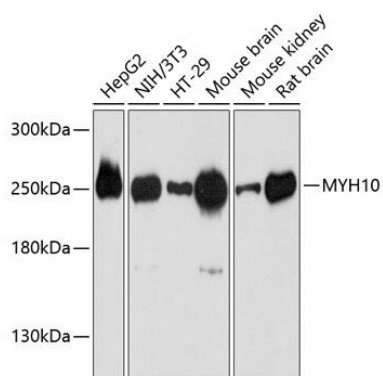
Recombinant fusion protein containing a sequence corresponding to amino acids 1908-2007 of human MYH10 (NP\_001242941.1).

### Storage:

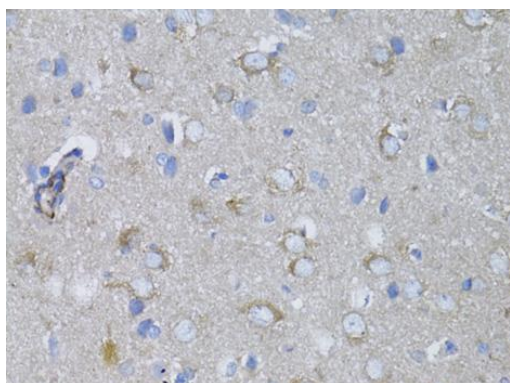
Store at -20°C. Avoid freeze / thaw cycles. Buffer: PBS with 0.02% sodium azide, 50% glycerol, pH7.3.

## Product Images

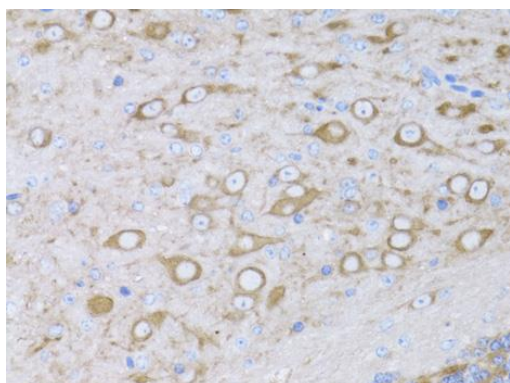
---



Western blot analysis of extracts of various cell lines, using MYH10 antibody (CAB12029) at 1:3000 dilution. Secondary antibody: HRP Goat Anti-Rabbit IgG (H+L) (CABS014) at 1:10000 dilution. Lysates/proteins: 25ug per lane. Blocking buffer: 3% nonfat dry milk in TBST. Detection: ECL Basic Kit (CABM00020). Exposure time: 30s.



Immunohistochemistry of paraffin-embedded rat brain using MYH10 antibody (CAB12029) at dilution of 1:100 (40x lens).



Immunohistochemistry of paraffin-embedded mouse brain using MYH10 antibody (CAB12029) at dilution of 1:100 (40x lens).