

RASSF1 Rabbit Polyclonal Antibody



CAB1203

Product Information

Size:

20uL, 50uL, 100uL, 200uL

Observed MW:

39kDa

Calculated MW:

8kDa/9kDa/16kDa/21kDa/31kDa/38kDa/39kDa

Applications:

WB IF

Reactivity:

Human, Mouse

Antibody Information

Recommended dilutions:

WB 1:500 - 1:2000 IF 1:50 - 1:200

Source:

Rabbit

Isotype:

IgG

Purification:

Affinity purification

Protein Background

This gene encodes a protein similar to the RAS effector proteins. Loss or altered expression of this gene has been associated with the pathogenesis of a variety of cancers, which suggests the tumor suppressor function of this gene. The inactivation of this gene was found to be correlated with the hypermethylation of its CpG-island promoter region. The encoded protein was found to interact with DNA repair protein XPA. The protein was also shown to inhibit the accumulation of cyclin D1, and thus induce cell cycle arrest. Several alternatively spliced transcript variants of this gene encoding distinct isoforms have been reported.

Immunogen information

Gene ID:

11186

Uniprot

Q9NS23

Synonyms:

RASSF1; 123F2; NORE2A; RASSF1A; RDA32; REH3P21

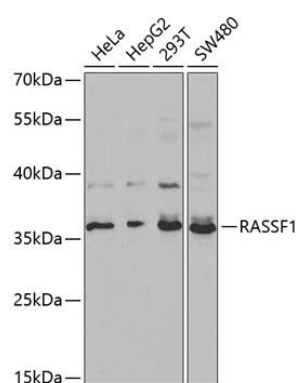
Immunogen:

Recombinant fusion protein containing a sequence corresponding to amino acids 101-340 of human RASSF1 (NP_009113.3).

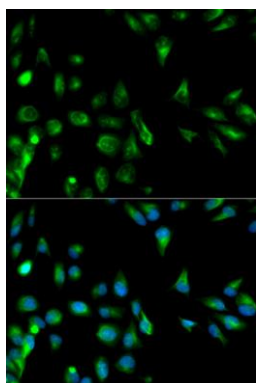
Storage:

Store at -20°C. Avoid freeze / thaw cycles. Buffer: PBS with 0.02% sodium azide, 50% glycerol, pH7.3.

Product Images



Western blot analysis of extracts of various cell lines, using RASSF1 antibody (CAB1203) at 1:1000 dilution. Secondary antibody: HRP Goat Anti-Rabbit IgG (H+L) (CABS014) at 1:10000 dilution. Lysates/proteins: 25ug per lane. Blocking buffer: 3% nonfat dry milk in TBST.



Immunofluorescence analysis of HeLa cells using RASSF1 antibody (CAB1203). Blue: DAPI for nuclear staining.