

# OPLAH Rabbit Polyclonal Antibody



CAB12032

---

## Product Information

### Size:

20uL, 50uL, 100uL, 200uL

### Observed MW:

134kDa

### Calculated MW:

137kDa

### Applications:

WB

### Reactivity:

Human, Mouse, Rat

## Protein Background

The protein encoded by this gene acts as a homodimer, using ATP hydrolysis to catalyze the conversion of 5-oxo-L-proline to L-glutamate. Defects in this gene are a cause of 5-oxoprolinase deficiency (OPLAHD).

## Immunogen information

### Gene ID:

26873

### Uniprot

O14841

### Synonyms:

OPLAH; 5-Opase; OPLA; OPLAHD

## Antibody Information

### Recommended dilutions:

WB 1:500 - 1:2000

### Source:

Rabbit

### Isotype:

IgG

### Purification:

Affinity purification

### Immunogen:

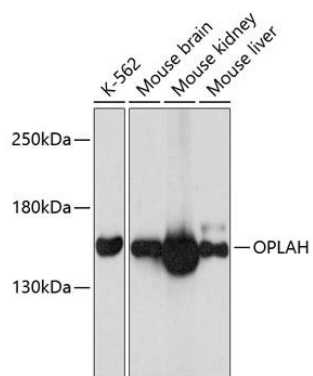
Recombinant fusion protein containing a sequence corresponding to amino acids 1119-1288 of human OPLAH (NP\_060040.1).

### Storage:

Store at -20°C. Avoid freeze / thaw cycles. Buffer: PBS with 0.02% sodium azide, 50% glycerol, pH7.3.

## Product Images

---



Western blot analysis of extracts of various cell lines, using OPLAH antibody (CAB12032) at 1:3000 dilution. Secondary antibody: HRP Goat Anti-Rabbit IgG (H+L) (CABS014) at 1:10000 dilution. Lysates/proteins: 25ug per lane. Blocking buffer: 3% nonfat dry milk in TBST. Detection: ECL Basic Kit (CABM00020). Exposure time: 1s.