

# SPRR3 Rabbit Polyclonal Antibody



CAB12041

---

## Product Information

### Size:

20uL, 50uL, 100uL, 200uL

### Observed MW:

26kDa

### Calculated MW:

18kDa

### Applications:

WB IF

### Reactivity:

Mouse, Rat

## Antibody Information

### Recommended dilutions:

WB 1:500 - 1:1000 IF 1:50 - 1:200

### Source:

Rabbit

### Isotype:

IgG

### Purification:

Affinity purification

## Protein Background

### Immunogen information

#### Gene ID:

6707

#### Uniprot

Q9UBC9

#### Synonyms:

SPRR3

#### Immunogen:

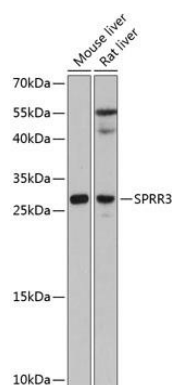
Recombinant fusion protein containing a sequence corresponding to amino acids 1-70 of human SPRR3 (NP\_005407.1).

#### Storage:

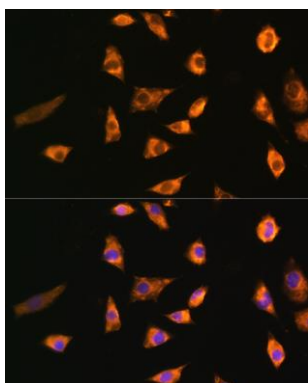
Store at -20°C. Avoid freeze / thaw cycles. Buffer: PBS with 0.02% sodium azide, 50% glycerol, pH7.3.

## Product Images

---



Western blot analysis of extracts of various cell lines, using SPRR3 antibody (CAB12041) at 1:3000 dilution. Secondary antibody: HRP Goat Anti-Rabbit IgG (H+L) (CABS014) at 1:10000 dilution. Lysates/proteins: 25ug per lane. Blocking buffer: 3% nonfat dry milk in TBST. Detection: ECL Basic Kit (CABM00020). Exposure time: 90s.



Immunofluorescence analysis of L929 cells using SPRR3 Rabbit pAb (CAB12041) at dilution of 1:100. Blue: DAPI for nuclear staining.