

# GRIPAP1 Rabbit Polyclonal Antibody



CAB12044

---

## Product Information

### Size:

20uL, 50uL, 100uL, 200uL

### Observed MW:

110kDa

### Calculated MW:

68kDa/71kDa/92kDa/95kDa

### Applications:

WB

### Reactivity:

Human

## Protein Background

This gene encodes a guanine nucleotide exchange factor for the Ras family of small G proteins (RasGEF). The encoded protein interacts in a complex with glutamate receptor interacting protein 1 (GRIP1) and plays a role in the regulation of AMPA receptor function.

## Immunogen information

### Gene ID:

56850

### Uniprot

Q4V328

### Synonyms:

GRIPAP1; GRASP-1

## Antibody Information

### Recommended dilutions:

WB 1:500 - 1:2000

### Source:

Rabbit

### Isotype:

IgG

### Purification:

Affinity purification

### Immunogen:

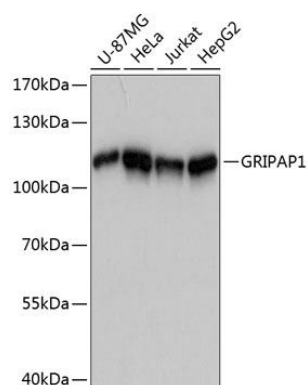
Recombinant fusion protein containing a sequence corresponding to amino acids 642-841 of human GRIPAP1 (NP\_064522.3).

### Storage:

Store at -20°C. Avoid freeze / thaw cycles. Buffer: PBS with 0.02% sodium azide, 50% glycerol, pH7.3.

## Product Images

---



Western blot analysis of extracts of various cell lines, using GRIPAP1 antibody (CAB12044) at 1:3000 dilution. Secondary antibody: HRP Goat Anti-Rabbit IgG (H+L) (CABS014) at 1:10000 dilution. Lysates/proteins: 25ug per lane. Blocking buffer: 3% nonfat dry milk in TBST. Detection: ECL Basic Kit (CABM00020). Exposure time: 60s.