

FOXP3 Rabbit Polyclonal Antibody



CAB12051

Product Information

Size:

20uL, 50uL, 100uL, 200uL

Observed MW:

47kDa

Calculated MW:

43kDa/44kDa/47kDa/49kDa

Applications:

WB IHC

Reactivity:

Human, Mouse, Rat

Antibody Information

Recommended dilutions:

WB 1:500 - 1:2000 IHC 1:50
- 1:200

Source:

Rabbit

Isotype:

IgG

Purification:

Affinity purification

Protein Background

The protein encoded by this gene is a member of the forkhead/winged-helix family of transcriptional regulators. Defects in this gene are the cause of immunodeficiency polyendocrinopathy, enteropathy, X-linked syndrome (IPEX), also known as X-linked autoimmunity-immunodeficiency syndrome. Alternatively spliced transcript variants encoding different isoforms have been identified.

Immunogen information

Gene ID:

50943

Uniprot

Q9BZS1

Synonyms:

FOXP3; AIID; DIETER; IPEX; JM2; PIDX; XPID

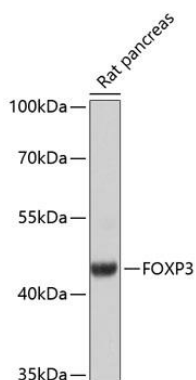
Immunogen:

A synthetic peptide corresponding to a sequence within amino acids 50-150 of human FOXP3 (NP_054728.2).

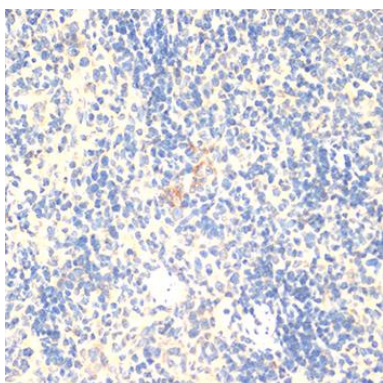
Storage:

Store at -20°C. Avoid freeze / thaw cycles. Buffer: PBS with 0.02% sodium azide, 50% glycerol, pH7.3.

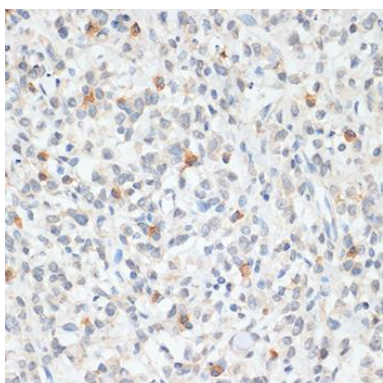
Product Images



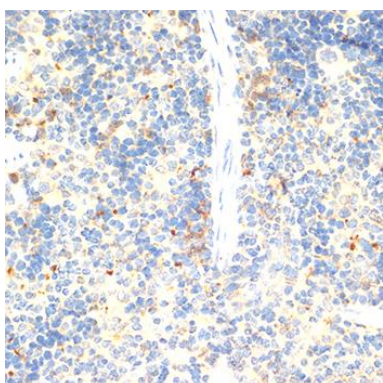
Western blot analysis of extracts of rat pancreas, using FOXP3 antibody (CAB12051) at 1:1000 dilution. Secondary antibody: HRP Goat Anti-Rabbit IgG (H+L) (CABS014) at 1:10000 dilution. Lysates/proteins: 25ug per lane. Blocking buffer: 3% nonfat dry milk in TBST. Detection: ECL Basic Kit (CABM00020). Exposure time: 15s.



Immunohistochemistry of paraffin-embedded rat spleen using FOXP3 antibody (CAB12051) at dilution of 1:100 (40x lens).



Immunohistochemistry of paraffin-embedded human gastric cancer using FOXP3 antibody (CAB12051) at dilution of 1:100 (40x lens).



Immunohistochemistry of paraffin-embedded mouse spleen using FOXP3 antibody (CAB12051) at dilution of 1:100 (40x lens).