

# CPQ Rabbit Polyclonal Antibody



**CAB12062**

---

## Product Information

### Size:

20uL, 50uL, 100uL, 200uL

### Observed MW:

57-60kDa

### Calculated MW:

51kDa

### Applications:

WB

### Reactivity:

Human, Mouse, Rat

## Antibody Information

### Recommended dilutions:

WB 1:500 - 1:2000

### Source:

Rabbit

### Isotype:

IgG

### Purification:

Affinity purification

## Protein Background

This gene encodes a metallopeptidase that belongs to the peptidase M28 family. The encoded protein may catalyze the cleavage of dipeptides with unsubstituted terminals into amino acids.

## Immunogen information

### Gene ID:

10404

### Uniprot

Q9Y646

### Synonyms:

CPQ; LDP; PGCP

### Immunogen:

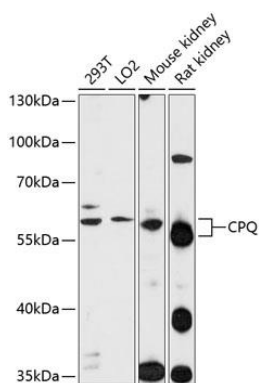
A synthetic peptide corresponding to a sequence within amino acids 1-100 of human CPQ (NP\_057218.1).

### Storage:

Store at -20°C. Avoid freeze / thaw cycles. Buffer: PBS with 0.02% sodium azide, 50% glycerol, pH7.3.

## Product Images

---



Western blot analysis of extracts of various cell lines, using CPQ antibody (CAB12062) at 1:1000 dilution. Secondary antibody: HRP Goat Anti-Rabbit IgG (H+L) (CABS014) at 1:10000 dilution. Lysates/proteins: 25ug per lane. Blocking buffer: 3% nonfat dry milk in TBST. Detection: ECL Enhanced Kit (CABM00021). Exposure time: 90s.