

# INADL Rabbit Polyclonal Antibody



CAB12063

## Product Information

### Size:

20uL, 50uL, 100uL, 200uL

### Observed MW:

170kDa

### Calculated MW:

125kDa/167kDa/170kDa/173kDa/196kDa

### Applications:

WB

### Reactivity:

Human, Mouse

## Protein Background

This gene encodes a protein with multiple PDZ domains. PDZ domains mediate protein-protein interactions, and proteins with multiple PDZ domains often organize multimeric complexes at the plasma membrane. This protein localizes to tight junctions and to the apical membrane of epithelial cells. A similar protein in *Drosophila* is a scaffolding protein which tethers several members of a multimeric signaling complex in photoreceptors.

## Immunogen information

### Gene ID:

10207

### Uniprot

Q8NI35

### Synonyms:

PATJ; Cipp; INADL; InaD-like; hINADL

## Antibody Information

### Recommended dilutions:

WB 1:500 - 1:2000

### Source:

Rabbit

### Isotype:

IgG

### Purification:

Affinity purification

### Immunogen:

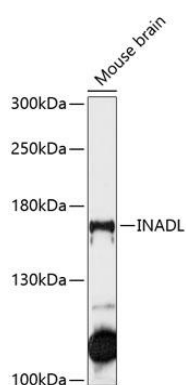
A synthetic peptide corresponding to a sequence within amino acids 1-100 of human INADL (NP\_795352.2).

### Storage:

Store at -20°C. Avoid freeze / thaw cycles. Buffer: PBS with 0.02% sodium azide, 50% glycerol, pH7.3.

## Product Images

---



Western blot analysis of extracts of mouse brain, using INADL antibody (CAB12063) at 1:1000 dilution. Secondary antibody: HRP Goat Anti-Rabbit IgG (H+L) (CABS014) at 1:10000 dilution. Lysates/proteins: 25ug per lane. Blocking buffer: 3% nonfat dry milk in TBST. Detection: ECL Basic Kit (CABM00020). Exposure time: 90s.