

# DTNA Rabbit Polyclonal Antibody



CAB12067

## Product Information

### Size:

20uL, 50uL, 100uL, 200uL

### Observed MW:

84kDa

### Calculated MW:

22kDa/36kDa/41-44kDa/50kDa/58-83kDa

### Applications:

WB

### Reactivity:

Human, Mouse

## Antibody Information

### Recommended dilutions:

WB 1:500 - 1:2000

### Source:

Rabbit

### Isotype:

IgG

### Purification:

Affinity purification

## Protein Background

The protein encoded by this gene belongs to the dystrobrevin subfamily of the dystrophin family. This protein is a component of the dystrophin-associated protein complex (DPC), which consists of dystrophin and several integral and peripheral membrane proteins, including dystroglycans, sarcoglycans, syntrophins and alpha- and beta-dystrobrevin. The DPC localizes to the sarcolemma and its disruption is associated with various forms of muscular dystrophy. Mutations in this gene are associated with left ventricular noncompaction with congenital heart defects. Multiple alternatively spliced transcript variants encoding different isoforms have been identified for this gene.

## Immunogen information

### Gene ID:

1837

### Uniprot

Q9Y4J8

### Synonyms:

DTNA; D18S892E; DRP3; DTN; DTN-A; LVNC1

### Immunogen:

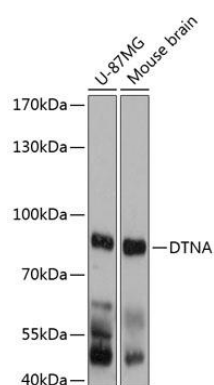
Recombinant fusion protein containing a sequence corresponding to amino acids 240-480 of human DTNA (NP\_001381.2).

### Storage:

Store at -20°C. Avoid freeze / thaw cycles. Buffer: PBS with 0.02% sodium azide, 50% glycerol, pH7.3.

## Product Images

---



Western blot analysis of extracts of various cell lines, using DTNA antibody (CAB12067) at 1:3000 dilution. Secondary antibody: HRP Goat Anti-Rabbit IgG (H+L) (CABS014) at 1:10000 dilution. Lysates/proteins: 25ug per lane. Blocking buffer: 3% nonfat dry milk in TBST. Detection: ECL Basic Kit (CABM00020). Exposure time: 10s.