

GIGYF2 Rabbit Polyclonal Antibody



CAB12069

Product Information

Size:

20uL, 50uL, 100uL, 200uL

Observed MW:

190kDa

Calculated MW:

148kDa/149kDa/150kDa/152kDa

Applications:

WB IHC

Reactivity:

Human, Rat

Antibody Information

Recommended dilutions:

WB 1:500 - 1:1000 IHC 1:50 - 1:100

Source:

Rabbit

Isotype:

IgG

Purification:

Affinity purification

Protein Background

This gene contains CAG trinucleotide repeats and encodes a protein containing several stretches of polyglutamine residues. The encoded protein may be involved in the regulation of tyrosine kinase receptor signaling. This gene is located in a chromosomal region that was genetically linked to Parkinson disease type 11, and mutations in this gene were thought to be causative for this disease. However, more recent studies in different populations have been unable to replicate this association. Alternative splicing results in multiple transcript variants.

Immunogen information

Gene ID:

26058

Uniprot

Q6Y7W6

Synonyms:

GIGYF2; GYF2; PARK11; PERQ2; PERQ3; TNRC15

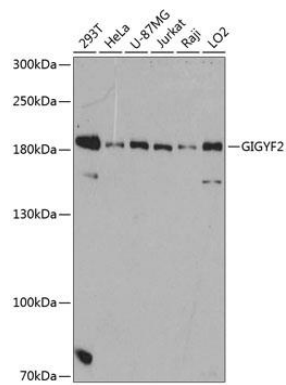
Immunogen:

Recombinant fusion protein containing a sequence corresponding to amino acids 350-500 of human GIGYF2 (NP_001096617.1).

Storage:

Store at -20°C. Avoid freeze / thaw cycles. Buffer: PBS with 0.02% sodium azide, 50% glycerol, pH7.3.

Product Images



Western blot analysis of extracts of various cell lines, using GIGYF2 antibody (CAB12069) at 1:3000 dilution. Secondary antibody: HRP Goat Anti-Rabbit IgG (H+L) (CABS014) at 1:10000 dilution. Lysates/proteins: 25ug per lane. Blocking buffer: 3% nonfat dry milk in TBST. Detection: ECL Basic Kit (CABM00020). Exposure time: 90s.