

# STAT1 Rabbit Polyclonal Antibody



CAB12075

## Product Information

### Size:

20uL, 50uL, 100uL, 200uL

### Observed MW:

91kDa

### Calculated MW:

83kDa/87kDa

### Applications:

WB IHC IF IP

### Reactivity:

Human, Mouse, Rat

## Antibody Information

### Recommended dilutions:

WB 1:500 - 1:2000 IHC 1:50  
- 1:200 IF 1:50 - 1:200 IP  
1:20 - 1:50

### Source:

Rabbit

### Isotype:

IgG

### Purification:

Affinity purification

## Protein Background

The protein encoded by this gene is a member of the STAT protein family. In response to cytokines and growth factors, STAT family members are phosphorylated by the receptor associated kinases, and then form homo- or heterodimers that translocate to the cell nucleus where they act as transcription activators. This protein can be activated by various ligands including interferon-alpha, interferon-gamma, EGF, PDGF and IL6. This protein mediates the expression of a variety of genes, which is thought to be important for cell viability in response to different cell stimuli and pathogens. Two alternatively spliced transcript variants encoding distinct isoforms have been described.

## Immunogen information

### Gene ID:

6772

### Uniprot

P42224

### Synonyms:

CANDF7; IMD31A; IMD31B; IMD31C; ISGF-3; STAT91; STAT1 alpha;  
STAT1

### Immunogen:

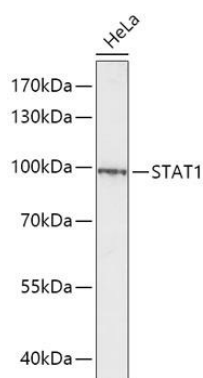
A synthetic peptide corresponding to a sequence within amino acids 650-750 of human STAT1 (NP\_009330.1).

### Storage:

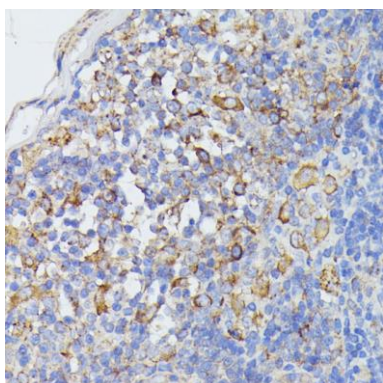
Store at -20°C. Avoid freeze / thaw cycles. Buffer: PBS with 0.02% sodium azide, 50% glycerol, pH7.3.

## Product Images

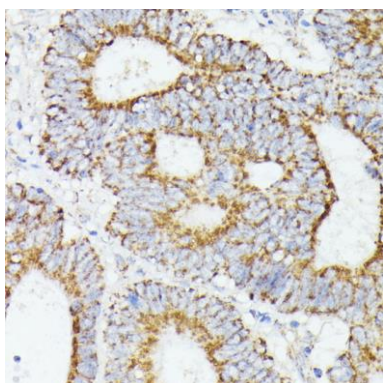
---



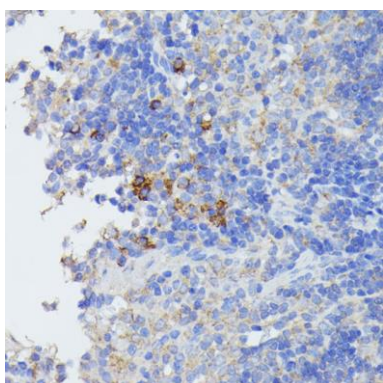
Western blot analysis of extracts of HeLa cells, using STAT1 antibody (CAB12075) at 1:1000 dilution. Secondary antibody: HRP Goat Anti-Rabbit IgG (H+L) (CABS014) at 1:10000 dilution. Lysates/proteins: 25ug per lane. Blocking buffer: 3% nonfat dry milk in TBST. Detection: ECL Basic Kit (CABM00020). Exposure time: 90s.



Immunohistochemistry of paraffin-embedded rat lymph node using STAT1 antibody (CAB12075) at dilution of 1:100 (40x lens).



Immunohistochemistry of paraffin-embedded human colon carcinoma using STAT1 antibody (CAB12075) at dilution of 1:100 (40x lens).



Immunohistochemistry of paraffin-embedded mouse spleen using STAT1 antibody (CAB12075) at dilution of 1:100 (40x lens).