

# UGDH Rabbit Polyclonal Antibody



CAB1210

---

## Product Information

### Size:

20uL, 50uL, 100uL, 200uL

### Observed MW:

56kDa

### Calculated MW:

44kDa/47kDa/55kDa

### Applications:

WB IHC IF

### Reactivity:

Human, Mouse, Rat

## Protein Background

The protein encoded by this gene converts UDP-glucose to UDP-glucuronate and thereby participates in the biosynthesis of glycosaminoglycans such as hyaluronan, chondroitin sulfate, and heparan sulfate. These glycosylated compounds are common components of the extracellular matrix and likely play roles in signal transduction, cell migration, and cancer growth and metastasis. The expression of this gene is up-regulated by transforming growth factor beta and down-regulated by hypoxia. Alternative splicing results in multiple transcript variants.

## Immunogen information

### Gene ID:

7358

### Uniprot

O60701

### Synonyms:

UGDH; GDH; UDP-GlcDH; UDPGDH; UGD

## Antibody Information

### Recommended dilutions:

WB 1:500 - 1:2000 IHC 1:50  
- 1:200 IF 1:50 - 1:200

### Source:

Rabbit

### Isotype:

IgG

### Purification:

Affinity purification

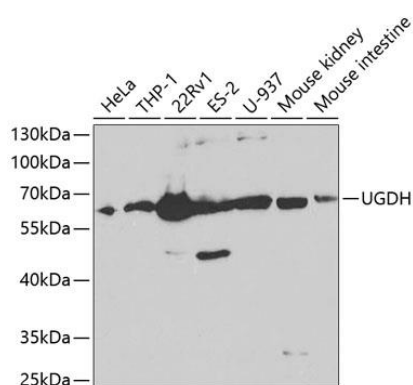
### Immunogen:

Recombinant fusion protein containing a sequence corresponding to amino acids 165-494 of human UGDH (NP\_003350.1).

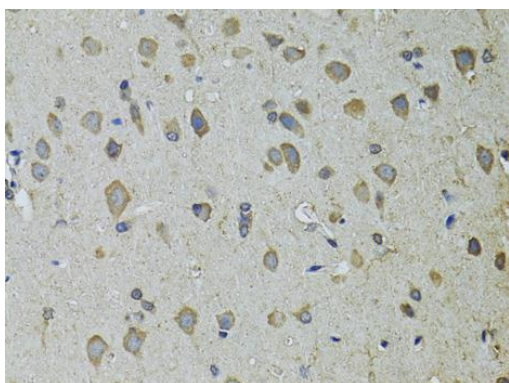
### Storage:

Store at -20°C. Avoid freeze / thaw cycles. Buffer: PBS with 0.02% sodium azide, 50% glycerol, pH7.3.

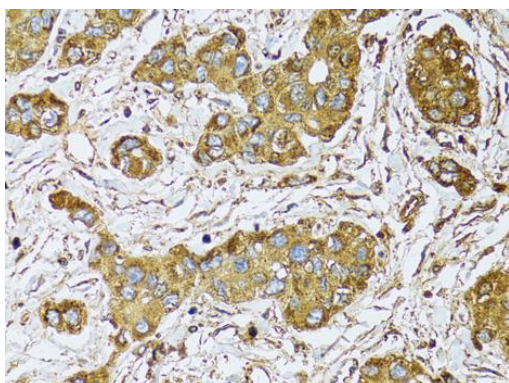
## Product Images



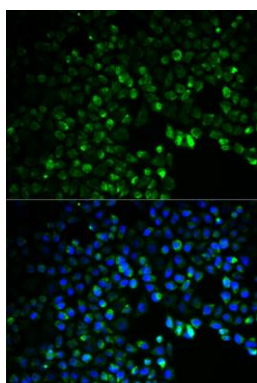
Western blot analysis of extracts of various cell lines, using UGDH Antibody (CAB1210) at 1:1000 dilution. Secondary antibody: HRP Goat Anti-Rabbit IgG (H+L) (CABS014) at 1:10000 dilution. Lysates/proteins: 25ug per lane. Blocking buffer: 3% nonfat dry milk in TBST.



Immunohistochemistry of paraffin-embedded rat brain using UGDH antibody (CAB1210) at dilution of 1:100 (40x lens).



Immunohistochemistry of paraffin-embedded human liver cancer using UGDH antibody (CAB1210) at dilution of 1:100 (40x lens).



Immunofluorescence analysis of HeLa cells using UGDH antibody (CAB1210). Blue: DAPI for nuclear staining.