

SEC23A Rabbit Polyclonal Antibody



CAB12101

Product Information

Size:

20uL, 50uL, 100uL, 200uL

Observed MW:

86kDa

Calculated MW:

63kDa/86kDa

Applications:

WB

Reactivity:

Human, Mouse, Rat

Protein Background

The protein encoded by this gene is a member of the SEC23 subfamily of the SEC23/SEC24 family. It is part of a protein complex and found in the ribosome-free transitional face of the endoplasmic reticulum (ER) and associated vesicles. This protein has similarity to yeast Sec23p component of COPII. COPII is the coat protein complex responsible for vesicle budding from the ER. The encoded protein is suggested to play a role in the ER-Golgi protein trafficking.

Immunogen information

Gene ID:

10484

Uniprot

Q15436

Synonyms:

SEC23A; CLSD

Antibody Information

Recommended dilutions:

WB 1:500 - 1:2000

Source:

Rabbit

Isotype:

IgG

Purification:

Affinity purification

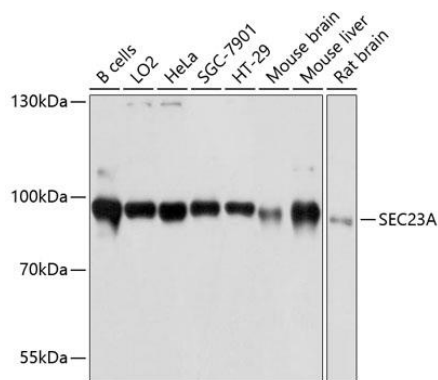
Immunogen:

Recombinant fusion protein containing a sequence corresponding to amino acids 1-150 of human SEC23A (NP_006355.2).

Storage:

Store at -20°C. Avoid freeze / thaw cycles. Buffer: PBS with 0.02% sodium azide, 50% glycerol, pH7.3.

Product Images



Western blot analysis of extracts of various cell lines, using SEC23A antibody (CAB12101) at 1:3000 dilution. Secondary antibody: HRP Goat Anti-Rabbit IgG (H+L) (CABS014) at 1:10000 dilution. Lysates/proteins: 25ug per lane. Blocking buffer: 3% nonfat dry milk in TBST. Detection: ECL Basic Kit (CABM00020). Exposure time: 10s.