

# SMARCD2 Rabbit Polyclonal Antibody



CAB12104

## Product Information

### Size:

20uL, 50uL, 100uL, 200uL

### Observed MW:

64kDa

### Calculated MW:

55kDa/57kDa/58kDa

### Applications:

WB IHC

### Reactivity:

Human, Mouse

## Antibody Information

### Recommended dilutions:

WB 1:500 - 1:2000 IHC 1:50  
- 1:200

### Source:

Rabbit

### Isotype:

IgG

### Purification:

Affinity purification

## Protein Background

The protein encoded by this gene is a member of the SWI/SNF family of proteins, whose members display helicase and ATPase activities and which are thought to regulate transcription of certain genes by altering the chromatin structure around those genes. The encoded protein is part of the large ATP-dependent chromatin remodeling complex SNF/SWI and has sequence similarity to the yeast Swp73 protein. Alternatively spliced transcript variants encoding different isoforms have been found for this gene.

## Immunogen information

### Gene ID:

6603

### Uniprot

Q92925

### Synonyms:

SMARCD2; BAF60B; CRACD2; PRO2451; Rsc6p; SGD2

### Immunogen:

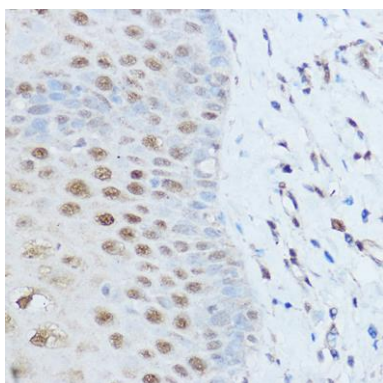
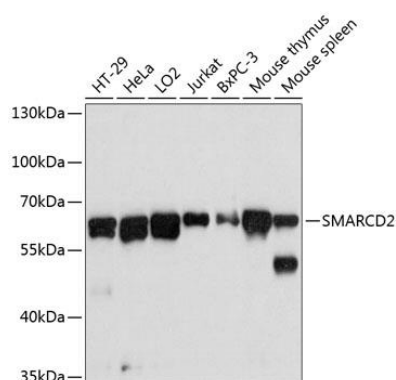
Recombinant fusion protein containing a sequence corresponding to amino acids 454-531 of human SMARCD2 (NP\_001091896.1).

### Storage:

Store at -20°C. Avoid freeze / thaw cycles. Buffer: PBS with 0.02% sodium azide, 50% glycerol, pH7.3.

## Product Images

---



Western blot analysis of extracts of various cell lines, using SMARCD2 antibody (CAB12104) at 1:3000 dilution. Secondary antibody: HRP Goat Anti-Rabbit IgG (H+L) (CABS014) at 1:10000 dilution. Lysates/proteins: 25ug per lane. Blocking buffer: 3% nonfat dry milk in TBST. Detection: ECL Basic Kit (CABM00020). Exposure time: 30s.

Immunohistochemistry of paraffin-embedded human esophageal cancer using SMARCD2 antibody (CAB12104) at dilution of 1:100 (40x lens).