

NCAM1 Rabbit Polyclonal Antibody



CAB12112

Product Information

Size:

20uL, 50uL, 100uL, 200uL

Observed MW:

175kDa

Calculated MW:

40kDa/73kDa/80kDa/83kDa/
93kDa/94kDa

Applications:

WB

Reactivity:

Human, Mouse

Antibody Information

Recommended dilutions:

WB 1:500 - 1:2000

Source:

Rabbit

Isotype:

IgG

Purification:

Affinity purification

Protein Background

This gene encodes a cell adhesion protein which is a member of the immunoglobulin superfamily. The encoded protein is involved in cell-to-cell interactions as well as cell-matrix interactions during development and differentiation. The encoded protein has been shown to be involved in development of the nervous system, and for cells involved in the expansion of T cells and dendritic cells which play an important role in immune surveillance. Alternative splicing results in multiple transcript variants.

Immunogen information

Gene ID:

4684

Uniprot

P13591

Synonyms:

CD56; MSK39; NCAM; NCAM1; NCAM1 /CD56

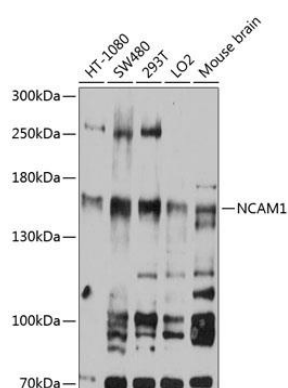
Immunogen:

Recombinant fusion protein containing a sequence corresponding to amino acids 500-720 of human NCAM1 (NP_851996.2).

Storage:

Store at -20°C. Avoid freeze / thaw cycles. Buffer: PBS with 0.02% sodium azide, 50% glycerol, pH7.3.

Product Images



Western blot analysis of extracts of various cell lines, using NCAM1 antibody (CAB12112) at 1:3000 dilution. Secondary antibody: HRP Goat Anti-Rabbit IgG (H+L) (CABS014) at 1:10000 dilution. Lysates/proteins: 25ug per lane. Blocking buffer: 3% nonfat dry milk in TBST. Detection: ECL Basic Kit (CABM00020). Exposure time: 30s.