

ACAP2 Rabbit Polyclonal Antibody



CAB12127

Product Information

Size:

20uL, 50uL, 100uL, 200uL

Observed MW:

115kDa

Calculated MW:

88kDa

Applications:

WB IHC IF

Reactivity:

Human, Mouse

Antibody Information

Recommended dilutions:

WB 1:500 - 1:2000 IHC 1:50
- 1:200 IF 1:50 - 1:200

Source:

Rabbit

Isotype:

IgG

Purification:

Affinity purification

Protein Background

Immunogen information

Gene ID:

23527

Uniprot

Q15057

Synonyms:

ACAP2; CENTB2; CNT-B2

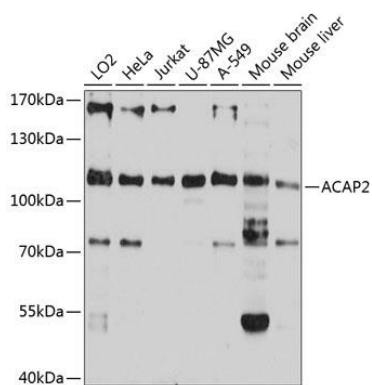
Immunogen:

Recombinant fusion protein containing a sequence corresponding to amino acids 50-160 of human ACAP2 (NP_036419.3).

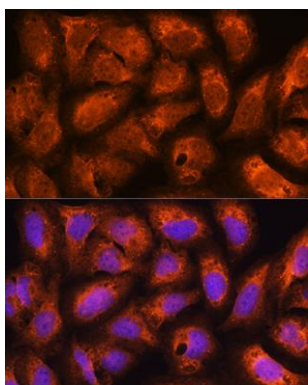
Storage:

Store at -20°C. Avoid freeze / thaw cycles. Buffer: PBS with 0.02% sodium azide, 50% glycerol, pH7.3.

Product Images



Western blot analysis of extracts of various cell lines, using ACAP2 antibody (CAB12127) at 1:1000 dilution. Secondary antibody: HRP Goat Anti-Rabbit IgG (H+L) (CABS014) at 1:10000 dilution. Lysates/proteins: 25ug per lane. Blocking buffer: 3% nonfat dry milk in TBST. Detection: ECL Basic Kit (CABM00020). Exposure time: 5s.



Immunofluorescence analysis of U2OS cells using ACAP2 Rabbit pAb (CAB12127) at dilution of 1:100. Blue: DAPI for nuclear staining.