

NLRP11 Rabbit Polyclonal Antibody



CAB12132

Product Information

Size:

20uL, 50uL, 100uL, 200uL

Observed MW:

110kDa

Calculated MW:

105kDa/111kDa/117kDa

Applications:

WB IF

Reactivity:

Human

Protein Background

This gene is a member of the the NOD-like receptor protein (NLRP) gene family and encodes a protein with an N-terminal pyrin death (PYD) domain and nucleoside triphosphate hydrolase (NACHT) domain and a C-terminal leucine-rich repeats (LRR) region. This gene has been shown to regulate caspases in the proinflammatory signal transduction pathway and, based on studies of other members of the NLRP gene family with similar domain structure, is predicted to form part of the multiprotein inflammasome complex. Alternative splicing produces multiple transcript variants encoding distinct isoforms.

Immunogen information

Gene ID:

204801

Uniprot

P59045

Synonyms:

NLRP11; CLR19.6; NALP11; NOD17; PAN10; PYPAF6; PYPAF7

Antibody Information

Recommended dilutions:

WB 1:500 - 1:2000 IF 1:50 - 1:200

Source:

Rabbit

Isotype:

IgG

Purification:

Affinity purification

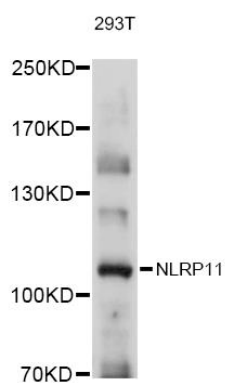
Immunogen:

Recombinant fusion protein containing a sequence corresponding to amino acids 420-600 of human NLRP11 (NP_659444.2).

Storage:

Store at -20°C. Avoid freeze / thaw cycles. Buffer: PBS with 0.02% sodium azide, 50% glycerol, pH7.3.

Product Images



Western blot analysis of extracts of 293T cells, using NLRP1 antibody (CAB12132) at 1:1000 dilution. Secondary antibody: HRP Goat Anti-Rabbit IgG (H+L) (CABS014) at 1:10000 dilution. Lysates/proteins: 25ug per lane. Blocking buffer: 3% nonfat dry milk in TBST. Detection: ECL Basic Kit (CABM00020). Exposure time: 1s.