

# DNAJC10 Rabbit Polyclonal Antibody



CAB12143

---

## Product Information

### Size:

20uL, 50uL, 100uL, 200uL

### Observed MW:

91kDa

### Calculated MW:

37kDa/86kDa/91kDa

### Applications:

WB IF

### Reactivity:

Human, Mouse,

## Protein Background

This gene encodes an endoplasmic reticulum co-chaperone which is part of the endoplasmic reticulum-associated degradation complex involved in recognizing and degrading misfolded proteins. The encoded protein reduces incorrect disulfide bonds in misfolded glycoproteins. Alternatively spliced transcript variants encoding multiple isoforms have been observed for this gene.

## Immunogen information

### Gene ID:

54431

### Uniprot

Q8IXB1

### Synonyms:

DNAJC10; ERdj5; JPDI; MTHr; PDIA19

## Antibody Information

### Recommended dilutions:

WB 1:500 - 1:2000 IF 1:50 - 1:200

### Source:

Rabbit

### Isotype:

IgG

### Purification:

Affinity purification

### Immunogen:

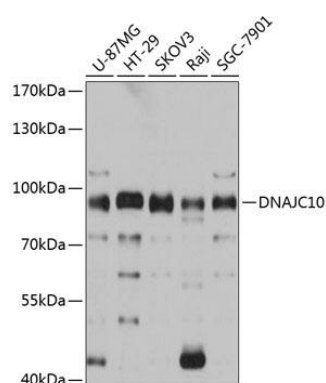
Recombinant fusion protein containing a sequence corresponding to amino acids 614-793 of human DNAJC10 (NP\_061854.1).

### Storage:

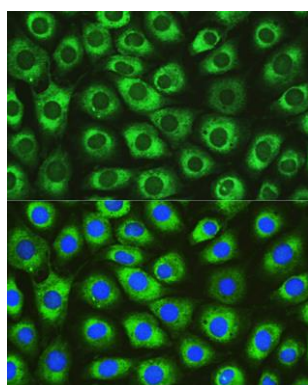
Store at -20°C. Avoid freeze / thaw cycles. Buffer: PBS with 0.02% sodium azide, 50% glycerol, pH7.3.

## Product Images

---



Western blot analysis of extracts of various cell lines, using DNAJC10 antibody (CAB12143) at 1:3000 dilution. Secondary antibody: HRP Goat Anti-Rabbit IgG (H+L) (CABS014) at 1:10000 dilution. Lysates/proteins: 25ug per lane. Blocking buffer: 3% nonfat dry milk in TBST. Detection: ECL Basic Kit (CABM00020). Exposure time: 1s.



Immunofluorescence analysis of L929 cells using DNAJC10 Rabbit pAb (CAB12143) at dilution of 1:100. Blue: DAPI for nuclear staining.