

[KO Validated] SHMT2 Rabbit Polyclonal Antibody

CAB1215



Product Information

Size:

20uL, 50uL, 100uL, 200uL

Observed MW:

56kDa

Calculated MW:

53kDa/54kDa/55kDa

Applications:

WB IHC IF IP

Reactivity:

Human, Mouse, Rat

Protein Background

This gene encodes the mitochondrial form of a pyridoxal phosphate-dependent enzyme that catalyzes the reversible reaction of serine and tetrahydrofolate to glycine and 5, 10-methylene tetrahydrofolate. The encoded product is primarily responsible for glycine synthesis. The activity of the encoded protein has been suggested to be the primary source of intracellular glycine. The gene which encodes the cytosolic form of this enzyme is located on chromosome 17. Alternative splicing results in multiple transcript variants.

Immunogen information

Gene ID:

6472

Uniprot

P34897

Synonyms:

SHMT2; GLYA; HEL-S-51e; SHMT

Antibody Information

Recommended dilutions:

WB 1:500 - 1:2000 IHC 1:50
- 1:200 IF 1:50 - 1:200 IP
1:50 - 1:200

Source:

Rabbit

Isotype:

IgG

Purification:

Affinity purification

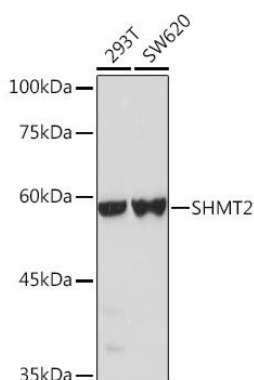
Immunogen:

Recombinant fusion protein containing a sequence corresponding to amino acids 265-504 of human SHMT2 (NP_005403.2).

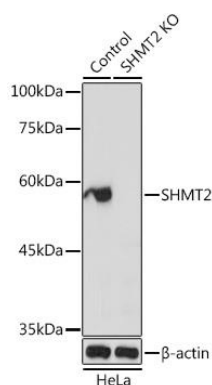
Storage:

Store at -20°C. Avoid freeze / thaw cycles. Buffer: PBS with 0.02% sodium azide, 50% glycerol, pH7.3.

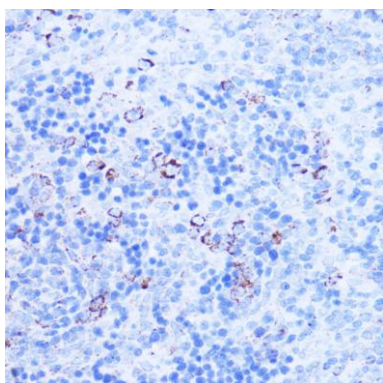
Product Images



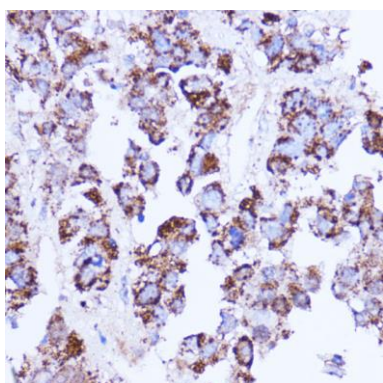
Western blot analysis of extracts of various cell lines, using SHMT2 Rabbit pAb (CAB1215) at 1:1000 dilution. Secondary antibody: HRP Goat Anti-Rabbit IgG (H+L) (CABS014) at 1:10000 dilution. Lysates/proteins: 25ug per lane. Blocking buffer: 3% nonfat dry milk in TBST. Detection: ECL Basic Kit (CABM00020). Exposure time: 3s.



Western blot analysis of extracts from normal (control) and SHMT2 Rabbit pAb knockout (KO) HeLa cells, using SHMT2 Rabbit pAb antibody (CAB1215) at 1:1000 dilution. Secondary antibody: HRP Goat Anti-Rabbit IgG (H+L) (CABS014) at 1:10000 dilution. Lysates/proteins: 25ug per lane. Blocking buffer: 3% nonfat dry milk in TBST. Detection: ECL Basic Kit (CABM00020). Exposure time: 3s.



Immunohistochemistry of paraffin-embedded rat spleen using SHMT2 antibody (CAB1215) at dilution of 1:100 (40x lens).



Immunohistochemistry of paraffin-embedded human liver cancer using SHMT2 antibody (CAB1215) at dilution of 1:100 (40x lens).