

EP400 Rabbit Polyclonal Antibody



CAB12151

Product Information

Size:

20uL, 50uL, 100uL, 200uL

Observed MW:

400kDa

Calculated MW:

331kDa/335kDa/339kDa/343kDa

Applications:

WB

Reactivity:

Human

Antibody Information

Recommended dilutions:

WB 1:500 - 1:1000

Source:

Rabbit

Isotype:

IgG

Purification:

Affinity purification

Protein Background

Immunogen information

Gene ID:

57634

Uniprot

Q96L91

Synonyms:

EP400; CAGH32; P400; TNRC12

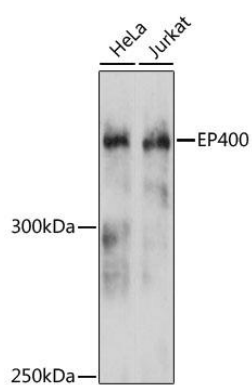
Immunogen:

Recombinant fusion protein containing a sequence corresponding to amino acids 90-330 of human EP400 (NP_056224.3).

Storage:

Store at -20°C. Avoid freeze / thaw cycles. Buffer: PBS with 0.02% sodium azide, 50% glycerol, pH7.3.

Product Images



Western blot analysis of extracts of various cell lines, using EP400 antibody (CAB12151) at 1:3000 dilution. Secondary antibody: HRP Goat Anti-Rabbit IgG (H+L) (CABS014) at 1:10000 dilution. Lysates/proteins: 25ug per lane. Blocking buffer: 3% nonfat dry milk in TBST. Detection: ECL Enhanced Kit (CABM00021). Exposure time: 90s.