

# PFKP Rabbit Polyclonal Antibody



CAB12160

## Product Information

### Size:

20uL, 50uL, 100uL, 200uL

### Observed MW:

86kDa

### Calculated MW:

85kDa

### Applications:

WB

### Reactivity:

Human

## Protein Background

This gene encodes a member of the phosphofructokinase A protein family. The encoded enzyme is the platelet-specific isoform of phosphofructokinase and plays a key role in glycolysis regulation. This gene may play a role in metabolic reprogramming in some cancers, including clear cell renal cell carcinomas, and cancer of the bladder, breast, and lung. Alternative splicing results in multiple transcript variants.

## Immunogen information

### Gene ID:

5214

### Uniprot

Q01813

### Synonyms:

PFKP; ATP-PFK; PFK-C; PFK-P; PFKF

## Antibody Information

### Recommended dilutions:

WB 1:500 - 1:2000

### Source:

Rabbit

### Isotype:

IgG

### Purification:

Affinity purification

### Immunogen:

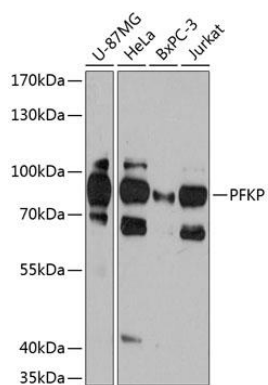
Recombinant fusion protein containing a sequence corresponding to amino acids 605-784 of human PFKP (NP\_002618.1).

### Storage:

Store at -20°C. Avoid freeze / thaw cycles. Buffer: PBS with 0.02% sodium azide, 50% glycerol, pH7.3.

## Product Images

---



Western blot analysis of extracts of various cell lines, using PFKP antibody (CAB12160) at 1:3000 dilution. Secondary antibody: HRP Goat Anti-Rabbit IgG (H+L) (CABS014) at 1:10000 dilution. Lysates/proteins: 25ug per lane. Blocking buffer: 3% nonfat dry milk in TBST. Detection: ECL Basic Kit (CABM00020). Exposure time: 60s.