

# SNRPF Rabbit Polyclonal Antibody



CAB12162

---

## Product Information

### Size:

20uL, 50uL, 100uL, 200uL

### Observed MW:

12kDa

### Calculated MW:

9kDa

### Applications:

WB IHC

### Reactivity:

Human, Mouse, Rat

## Antibody Information

### Recommended dilutions:

WB 1:500 - 1:2000 IHC 1:50  
- 1:200

### Source:

Rabbit

### Isotype:

IgG

### Purification:

Affinity purification

## Protein Background

### Immunogen information

#### Gene ID:

6636

#### Uniprot

P62306

#### Synonyms:

SNRPF; SMF; Sm-F; snRNP-F

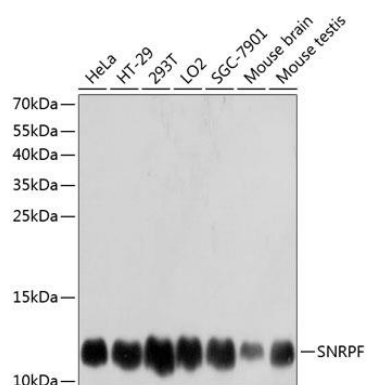
#### Immunogen:

Recombinant fusion protein containing a sequence corresponding to amino acids 1-86 of human SNRPF (NP\_003086.1).

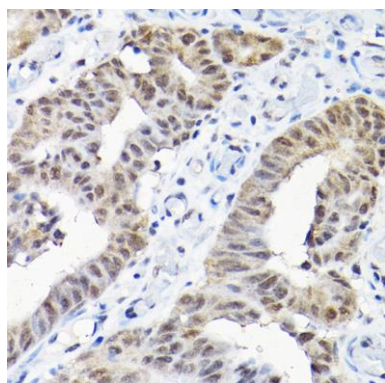
#### Storage:

Store at -20°C. Avoid freeze / thaw cycles. Buffer: PBS with 0.02% sodium azide, 50% glycerol, pH7.3.

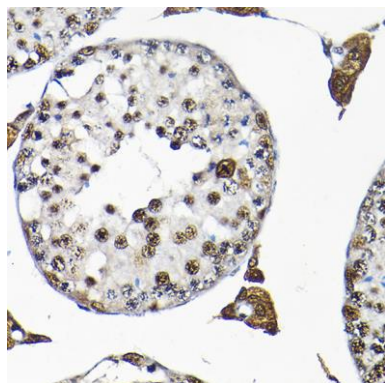
## Product Images



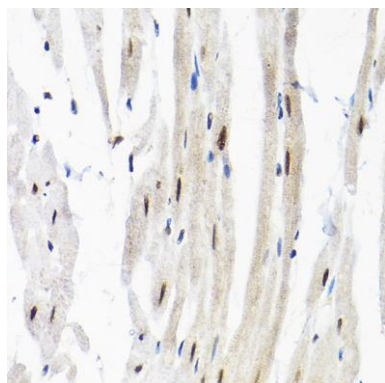
Western blot analysis of extracts of various cell lines, using SNRPF antibody (CAB12162) at 1:3000 dilution. Secondary antibody: HRP Goat Anti-Rabbit IgG (H+L) (CABS014) at 1:10000 dilution. Lysates/proteins: 25ug per lane. Blocking buffer: 3% nonfat dry milk in TBST. Detection: ECL Basic Kit (CABM00020). Exposure time: 1s.



Immunohistochemistry of paraffin-embedded human colon carcinoma using SNRPF Rabbit pAb (CAB12162) at dilution of 1:200 (40x lens).



Immunohistochemistry of paraffin-embedded mouse testis using SNRPF Rabbit pAb (CAB12162) at dilution of 1:200 (40x lens).



Immunohistochemistry of paraffin-embedded rat heart using SNRPF Rabbit pAb (CAB12162) at dilution of 1:200 (40x lens).