

# SRPX Rabbit Polyclonal Antibody



CAB1217

---

## Product Information

### Size:

20uL, 50uL, 100uL, 200uL

### Observed MW:

85kDa

### Calculated MW:

41kDa/45kDa/49kDa/51kDa

### Applications:

WB IHC IF

### Reactivity:

Human, Mouse

## Antibody Information

### Recommended dilutions:

WB 1:500 - 1:2000 IHC 1:50  
- 1:100 IF 1:50 - 1:100

### Source:

Rabbit

### Isotype:

IgG

### Purification:

Affinity purification

## Protein Background

### Immunogen information

#### Gene ID:

8406

#### Uniprot

P78539

#### Synonyms:

SRPX; DRS; ETX1; HEL-S-83p; SRPX1

#### Immunogen:

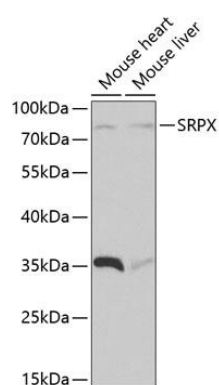
Recombinant fusion protein containing a sequence corresponding to amino acids 40-320 of human SRPX (NP\_006298.1).

#### Storage:

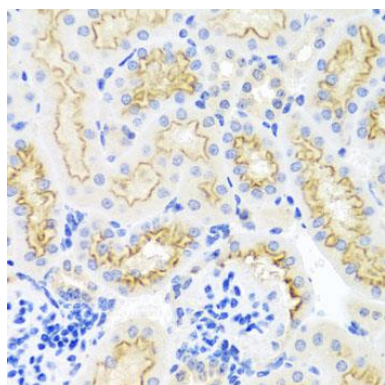
Store at -20°C. Avoid freeze / thaw cycles. Buffer: PBS with 0.02% sodium azide, 50% glycerol, pH7.3.

## Product Images

---



Western blot analysis of extracts of various cell lines, using SRPX antibody (CAB1217) at 1:1000 dilution. Secondary antibody: HRP Goat Anti-Rabbit IgG (H+L) (CABS014) at 1:10000 dilution. Lysates/proteins: 25ug per lane. Blocking buffer: 3% nonfat dry milk in TBST.



Immunohistochemistry of paraffin-embedded mouse kidney using SRPX antibody (CAB1217) at dilution of 1:100 (40x lens).