

# CDH11 Rabbit Polyclonal Antibody



CAB12176

## Product Information

### Size:

20uL, 50uL, 100uL, 200uL

### Observed MW:

110kDa

### Calculated MW:

76kDa/87kDa

### Applications:

WB, IF

### Reactivity:

Human, Mouse

### Category:

Polyclonal Antibodies

## Protein Background

This gene encodes a type II classical cadherin from the cadherin superfamily, integral membrane proteins that mediate calcium-dependent cell-cell adhesion. Mature cadherin proteins are composed of a large N-terminal extracellular domain, a single membrane-spanning domain, and a small, highly conserved C-terminal cytoplasmic domain. Type II (atypical) cadherins are defined based on their lack of a HAV cell adhesion recognition sequence specific to type I cadherins. Expression of this particular cadherin in osteoblastic cell lines, and its upregulation during differentiation, suggests a specific function in bone development and maintenance.

## Immunogen information

### Gene ID:

1009

### Uniprot

P55287

### Synonyms:

CDH11; CAD11; CDHOB; OB; OSF-4

## Antibody Information

### Recommended dilutions:

WB 1:500 - 1:1000

IF 1:50 - 1:200

### Source:

Rabbit

### Isotype:

IgG

### Purification:

Affinity purification

### Immunogen:

Recombinant protein of human CDH11

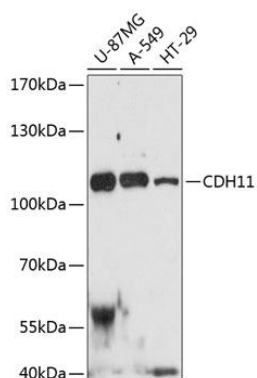
### Storage:

Store at -20°C. Avoid freeze / thaw cycles.

Buffer: PBS with 0.02% sodium azide, 50% glycerol, pH7.3.

## Product Images

---



Western blot analysis of extracts of various cell lines, using CDH11 antibody (CAB12176) at 1:3000 dilution.

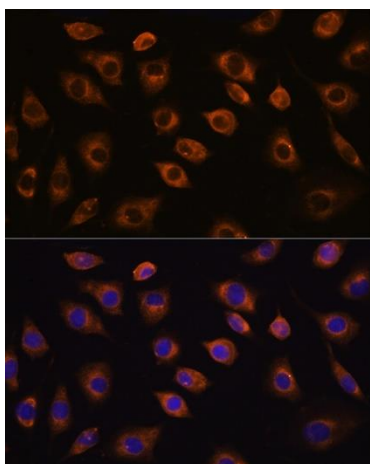
Secondary antibody: HRP Goat Anti-Rabbit IgG (H+L) (CABS014) at 1:10000 dilution.

Lysates/proteins: 25ug per lane.

Blocking buffer: 3% non-fat dry milk in TBST.

Detection: ECL Enhanced Kit.

Exposure time: 90s.



Immunofluorescence analysis of L929 cells using CDH11 antibody (A12176) at dilution of 1:100. Blue: DAPI for nuclear staining.