

# UBR4 Rabbit Polyclonal Antibody



CAB12193

---

## Product Information

### Size:

20uL, 50uL, 100uL, 200uL

### Observed MW:

600kDa

### Calculated MW:

23kDa/270kDa/571kDa/573kDa/575kDa

### Applications:

WB

### Reactivity:

Human

## Protein Background

The protein encoded by this gene is an E3 ubiquitin-protein ligase that interacts with the retinoblastoma-associated protein in the nucleus and with calcium-bound calmodulin in the cytoplasm. The encoded protein appears to be a cytoskeletal component in the cytoplasm and part of the chromatin scaffold in the nucleus. In addition, this protein is a target of the human papillomavirus type 16 E7 oncoprotein.

## Immunogen information

### Gene ID:

23352

### Uniprot

Q5T4S7

### Synonyms:

UBR4; RBAF600; ZUBR1; p600

## Antibody Information

### Recommended dilutions:

WB 1:500 - 1:1000

### Source:

Rabbit

### Isotype:

IgG

### Purification:

Affinity purification

### Immunogen:

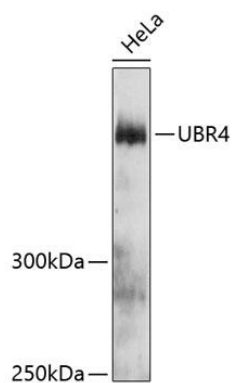
Recombinant fusion protein containing a sequence corresponding to amino acids 4884-5183 of human UBR4 (NP\_065816.2).

### Storage:

Store at -20°C. Avoid freeze / thaw cycles. Buffer: PBS with 0.02% sodium azide, 50% glycerol, pH7.3.

## Product Images

---



Western blot analysis of extracts of HeLa cells, using UBR4 antibody (CAB12193) at 1:3000 dilution. Secondary antibody: HRP Goat Anti-Rabbit IgG (H+L) (CABS014) at 1:10000 dilution. Lysates/proteins: 25ug per lane. Blocking buffer: 3% nonfat dry milk in TBST. Detection: ECL Enhanced Kit (CABM00021). Exposure time: 90s.