

# ATL3 Rabbit Polyclonal Antibody



CAB12196

---

## Product Information

### Size:

20uL, 50uL, 100uL, 200uL

### Observed MW:

50-60kDa

### Calculated MW:

60kDa

### Applications:

WB

### Reactivity:

Human, Mouse, Rat

## Protein Background

This gene encodes a member of a family of dynamin-like, integral membrane GTPases. The encoded protein is required for the proper formation of the network of interconnected tubules of the endoplasmic reticulum. Mutations in this gene may be associated with hereditary sensory neuropathy type IF. Alternatively spliced transcript variants that encode distinct isoforms have been described.

## Immunogen information

### Gene ID:

25923

### Uniprot

Q6DD88

### Synonyms:

ATL3; HSN1F

## Antibody Information

### Recommended dilutions:

WB 1:500 - 1:2000

### Source:

Rabbit

### Isotype:

IgG

### Purification:

Affinity purification

### Immunogen:

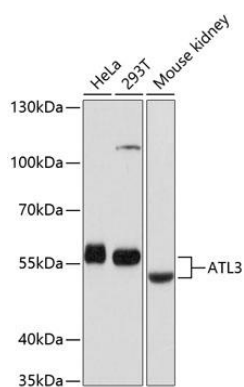
Recombinant fusion protein containing a sequence corresponding to amino acids 360-440 of human ATL3 (NP\_056274.3).

### Storage:

Store at -20°C. Avoid freeze / thaw cycles. Buffer: PBS with 0.02% sodium azide, 50% glycerol, pH7.3.

## Product Images

---



Western blot analysis of extracts of various cell lines, using ATL3 antibody (CAB12196) at 1:1000 dilution. Secondary antibody: HRP Goat Anti-Rabbit IgG (H+L) (CABS014) at 1:10000 dilution. Lysates/proteins: 25ug per lane. Blocking buffer: 3% nonfat dry milk in TBST. Detection: ECL Basic Kit (CABM00020). Exposure time: 1s.