

CLEC1A Rabbit Polyclonal Antibody



CAB12207

Product Information

Size:

20uL, 50uL, 100uL, 200uL

Observed MW:

37kDa

Calculated MW:

31kDa

Applications:

WB

Reactivity:

Human, Mouse, Rat

Protein Background

This gene encodes a member of the C-type lectin/C-type lectin-like domain (CTL/CTLD) superfamily. Members of this family share a common protein fold and have diverse functions, such as cell adhesion, cell-cell signaling, glycoprotein turnover, and roles in inflammation and immune response. The encoded protein may play a role in regulating dendritic cell function. This gene is closely linked to other CTL/CTLD superfamily members on chromosome 12p13 in the natural killer gene complex region. Alternative splicing results in multiple transcript variants.

Immunogen information

Gene ID:

51267

Uniprot

Q8NC01

Synonyms:

CLEC1A; CLEC-1; CLEC1

Antibody Information

Recommended dilutions:

WB 1:500 - 1:2000

Source:

Rabbit

Isotype:

IgG

Purification:

Affinity purification

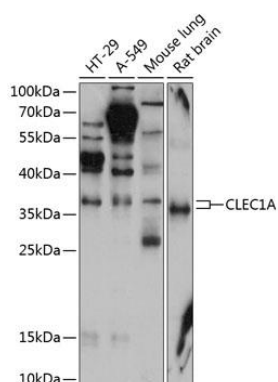
Immunogen:

Recombinant fusion protein containing a sequence corresponding to amino acids 74-280 of human CLEC1A (NP_057595.2).

Storage:

Store at -20°C. Avoid freeze / thaw cycles. Buffer: PBS with 0.02% sodium azide, 50% glycerol, pH7.3.

Product Images



Western blot analysis of extracts of various cell lines, using CLEC1A antibody (CAB12207) at 1:1000 dilution. Secondary antibody: HRP Goat Anti-Rabbit IgG (H+L) (CABS014) at 1:10000 dilution. Lysates/proteins: 25ug per lane. Blocking buffer: 3% nonfat dry milk in TBST. Detection: ECL Enhanced Kit (CABM00021). Exposure time: 90s.