

# DNAL4 Rabbit Polyclonal Antibody



CAB12208

---

## Product Information

**Size:**

20uL, 50uL, 100uL, 200uL

**Observed MW:**

12kDa

**Calculated MW:**

12kDa

**Applications:**

WB

**Reactivity:**

Human, Mouse, Rat

## Protein Background

This gene encodes an axonemal dynein light chain which functions as a component of the outer dynein arms complex. This complex acts as the molecular motor that provides the force to move cilia in an ATP-dependent manner. The encoded protein is expressed in tissues with motile cilia or flagella and may be involved in the movement of sperm flagella.

## Immunogen information

**Gene ID:**

10126

**Uniprot**

O96015

**Synonyms:**

DNAL4; MRMV3; PIG27

## Antibody Information

**Recommended dilutions:**

WB 1:500 - 1:2000

**Source:**

Rabbit

**Isotype:**

IgG

**Purification:**

Affinity purification

**Immunogen:**

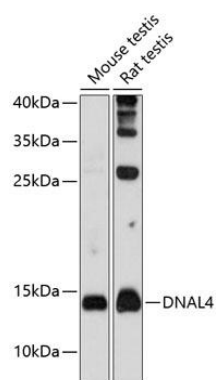
Recombinant fusion protein containing a sequence corresponding to amino acids 1-105 of human DNAL4 (NP\_005731.1).

**Storage:**

Store at -20°C. Avoid freeze / thaw cycles. Buffer: PBS with 0.02% sodium azide, 50% glycerol, pH7.3.

## Product Images

---



Western blot analysis of extracts of various cell lines, using DNAL4 antibody (CAB12208) at 1:1000 dilution. Secondary antibody: HRP Goat Anti-Rabbit IgG (H+L) (CABS014) at 1:10000 dilution. Lysates/proteins: 25ug per lane. Blocking buffer: 3% nonfat dry milk in TBST. Detection: ECL Basic Kit (CABM00020). Exposure time: 90s.