

FUCA2 Rabbit Polyclonal Antibody



CAB12211

Product Information

Size:

20uL, 50uL, 100uL, 200uL

Observed MW:

45kDa

Calculated MW:

19kDa/54kDa

Applications:

WB IHC

Reactivity:

Human, Mouse, Rat

Antibody Information

Recommended dilutions:

WB 1:500 - 1:2000 IHC 1:50
- 1:200

Source:

Rabbit

Isotype:

IgG

Purification:

Affinity purification

Protein Background

This gene encodes a plasma alpha-L-fucosidase, which represents 10-20% of the total cellular fucosidase activity. The protein is a member of the glycosyl hydrolase 29 family, and catalyzes the hydrolysis of the alpha-1, 6-linked fucose joined to the reducing-end N-acetylglucosamine of the carbohydrate moieties of glycoproteins. This enzyme is essential for Helicobacter pylori adhesion to human gastric cancer cells.

Immunogen information

Gene ID:

2519

Uniprot

Q9BTY2

Synonyms:

FUCA2; dJ20N2.5

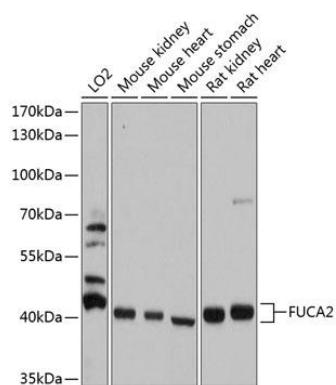
Immunogen:

Recombinant fusion protein containing a sequence corresponding to amino acids 118-467 of human FUCA2 (NP_114409.2).

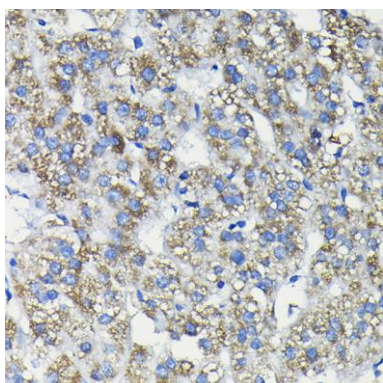
Storage:

Store at -20°C. Avoid freeze / thaw cycles. Buffer: PBS with 0.02% sodium azide, 50% glycerol, pH7.3.

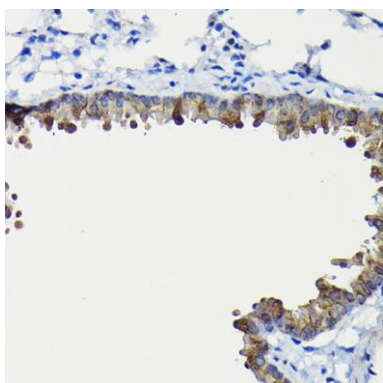
Product Images



Western blot analysis of extracts of various cell lines, using FUCA2 antibody (CAB12211) at 1:1000 dilution. Secondary antibody: HRP Goat Anti-Rabbit IgG (H+L) (CABS014) at 1:10000 dilution. Lysates/proteins: 25ug per lane. Blocking buffer: 3% nonfat dry milk in TBST. Detection: ECL Basic Kit (CABM00020). Exposure time: 5s.



Immunohistochemistry of paraffin-embedded human liver cancer using FUCA2 Rabbit pAb (CAB12211) at dilution of 1:200 (40x lens).



Immunohistochemistry of paraffin-embedded mouse lung using FUCA2 Rabbit pAb (CAB12211) at dilution of 1:200 (40x lens).