

ARHGAP25 Rabbit Polyclonal Antibody



CAB1223

Product Information

Size:

20uL, 50uL, 100uL, 200uL

Observed MW:

70kDa

Calculated MW:

51kDa/69kDa/72kDa/73kDa

Applications:

WB IHC IF

Reactivity:

Human, Mouse, Rat

Antibody Information

Recommended dilutions:

WB 1:500 - 1:2000 IHC 1:50
- 1:100 IF 1:50 - 1:100

Source:

Rabbit

Isotype:

IgG

Purification:

Affinity purification

Protein Background

Immunogen information

Gene ID:

9938

Uniprot

P42331

Synonyms:

ARHGAP25; HEL-S-308; KAIA0053

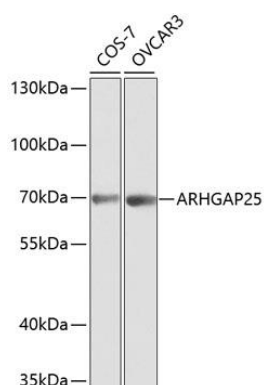
Immunogen:

Recombinant fusion protein containing a sequence corresponding to amino acids 1-370 of human ARHGAP25 (NP_001159748.1).

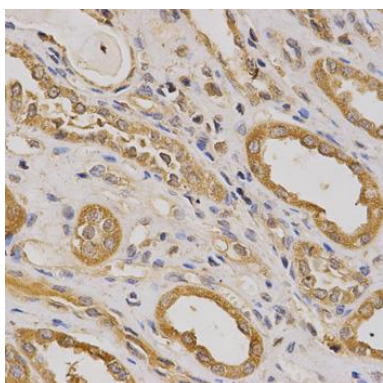
Storage:

Store at -20°C. Avoid freeze / thaw cycles. Buffer: PBS with 0.02% sodium azide, 50% glycerol, pH7.3.

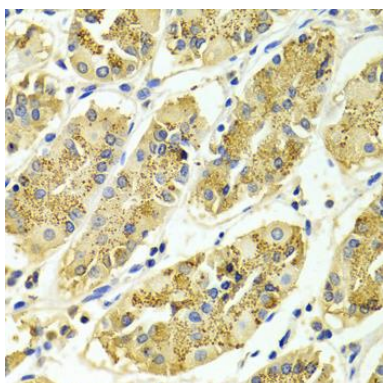
Product Images



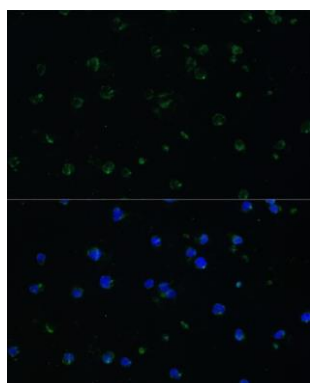
Western blot analysis of extracts of various cell lines, using ARHGAP25 antibody (CAB1223) at 1:1000 dilution. Secondary antibody: HRP Goat Anti-Rabbit IgG (H+L) (CABS014) at 1:10000 dilution. Lysates/proteins: 25ug per lane. Blocking buffer: 3% nonfat dry milk in TBST.



Immunohistochemistry of paraffin-embedded human kidney using ARHGAP25 antibody (CAB1223) at dilution of 1:200 (40x lens).



Immunohistochemistry of paraffin-embedded Human gastric using ARHGAP25 antibody (CAB1223) at dilution of 1:100 (40x lens).



Immunofluorescence analysis of Jurkat cells using ARHGAP25 Polyclonal Antibody (CAB1223) at dilution of 1:100 (40x lens). Blue: DAPI for nuclear staining.