

PPT2 Rabbit Polyclonal Antibody



CAB12251

Product Information

Size:

20uL, 50uL, 100uL, 200uL

Observed MW:

36kDa

Calculated MW:

34kDa

Applications:

WB IHC

Reactivity:

Human, Mouse

Protein Background

This gene encodes a member of the palmitoyl-protein thioesterase family. The encoded glycosylated lysosomal protein has palmitoyl-CoA hydrolase activity in vitro, but does not hydrolyze palmitate from cysteine residues in proteins. Alternative splicing results in multiple transcript variants. Read-through transcription also exists between this gene and the downstream EGFL8 (EGF-like-domain, multiple 8) gene.

Immunogen information

Gene ID:

9374

Uniprot

Q9UMR5

Synonyms:

PPT2; C6orf8; G14; PPT-2

Antibody Information

Recommended dilutions:

WB 1:500 - 1:2000 IHC 1:50
- 1:200

Source:

Rabbit

Isotype:

IgG

Purification:

Affinity purification

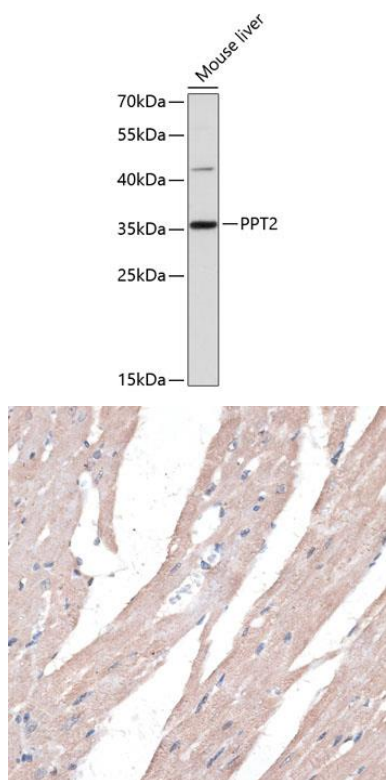
Immunogen:

Recombinant fusion protein containing a sequence corresponding to amino acids 28-302 of human PPT2 (NP_005146.4).

Storage:

Store at -20°C. Avoid freeze / thaw cycles. Buffer: PBS with 0.02% sodium azide, 50% glycerol, pH7.3.

Product Images



Western blot analysis of extracts of mouse liver, using PPT2 antibody (CAB12251) at 1:3000 dilution. Secondary antibody: HRP Goat Anti-Rabbit IgG (H+L) (CABS014) at 1:10000 dilution. Lysates/proteins: 25ug per lane. Blocking buffer: 3% nonfat dry milk in TBST. Detection: ECL Basic Kit (CABM00020). Exposure time: 90s.

Immunohistochemistry of paraffin-embedded mouse heart using PPT2 antibody (CAB12251) at dilution of 1:100 (40x lens).