

# DPYSL3 Rabbit Polyclonal Antibody



CAB12280

---

## Product Information

### Size:

20uL, 50uL, 100uL, 200uL

### Observed MW:

62KDa

### Calculated MW:

61kDa/73kDa

### Applications:

WB

### Reactivity:

Mouse, Rat

## Antibody Information

### Recommended dilutions:

WB 1:500 - 1:2000

### Source:

Rabbit

### Isotype:

IgG

### Purification:

Affinity purification

## Protein Background

### Immunogen information

#### Gene ID:

1809

#### Uniprot

Q14195

#### Synonyms:

DPYSL3; CRMP-4; CRMP4; DRP-3; DRP3; LCRMP; ULIP; ULIP-1

#### Immunogen:

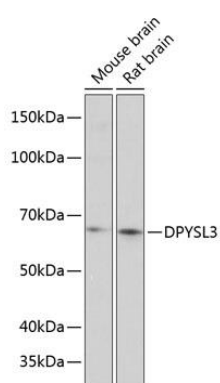
Recombinant fusion protein containing a sequence corresponding to amino acids 1-280 of human DPYSL3 (NP\_001184223.1).

#### Storage:

Store at -20°C. Avoid freeze / thaw cycles. Buffer: PBS with 0.02% sodium azide, 50% glycerol, pH7.3.

## Product Images

---



Western blot analysis of extracts of various cell lines, using DPYSL3 Polyclonal Antibody (CAB12280) at 1:1000 dilution. Secondary antibody: HRP Goat Anti-Rabbit IgG (H+L) (CABS014) at 1:10000 dilution. Lysates/proteins: 25ug per lane. Blocking buffer: 3% nonfat dry milk in TBST. Detection: ECL Basic Kit (CABM00020). Exposure time: 3min.