

PANX2 Rabbit Polyclonal Antibody



CAB12281

Product Information

Size:

20uL, 50uL, 100uL, 200uL

Observed MW:

65kDa

Calculated MW:

55kDa/70kDa/74kDa

Applications:

WB

Reactivity:

Human, Mouse, Rat

Protein Background

The protein encoded by this gene belongs to the innexin family. Innexin family members are the structural components of gap junctions. This protein and pannexin 1 are abundantly expressed in central nervous system (CNS) and are coexpressed in various neuronal populations. Studies in *Xenopus* oocytes suggest that this protein alone and in combination with pannexin 1 may form cell type-specific gap junctions with distinct properties. Multiple transcript variants encoding different isoforms have been found for this gene.

Immunogen information

Gene ID:

56666

Uniprot

Q96RD6

Synonyms:

PANX2; PX2; hPANX2

Antibody Information

Recommended dilutions:

WB 1:500 - 1:2000

Source:

Rabbit

Isotype:

IgG

Purification:

Affinity purification

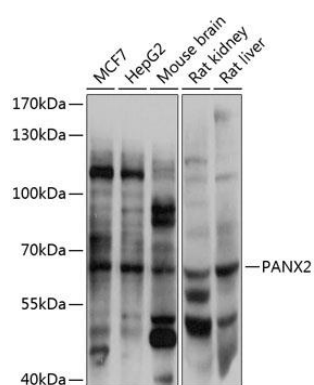
Immunogen:

Recombinant fusion protein containing a sequence corresponding to amino acids 320-480 of human PANX2 (NP_443071.2).

Storage:

Store at -20°C. Avoid freeze / thaw cycles. Buffer: PBS with 0.02% sodium azide, 50% glycerol, pH7.3.

Product Images



Western blot analysis of extracts of various cell lines, using PANX2 antibody (CAB12281) at 1:3000 dilution. Secondary antibody: HRP Goat Anti-Rabbit IgG (H+L) (CABS014) at 1:10000 dilution. Lysates/proteins: 25ug per lane. Blocking buffer: 3% nonfat dry milk in TBST. Detection: ECL Basic Kit (CABM00020). Exposure time: 1s.