

# Snail Rabbit Polyclonal Antibody



CAB12301

## Product Information

### Size:

20uL, 50uL, 100uL, 200uL

### Observed MW:

29kDa

### Calculated MW:

29kDa

### Applications:

WB IHC IF

### Reactivity:

Human, Mouse, Rat

## Protein Background

The Drosophila embryonic protein snail is a zinc finger transcriptional repressor which downregulates the expression of ectodermal genes within the mesoderm. The nuclear protein encoded by this gene is structurally similar to the Drosophila snail protein, and is also thought to be critical for mesoderm formation in the developing embryo. At least two variants of a similar processed pseudogene have been found on chromosome 2.

## Immunogen information

### Gene ID:

6615

### Uniprot

O95863

### Synonyms:

SNAIL1; SLUGH2; SNA; SNAH; SNAIL; SNAIL1; dJ710H13.1

## Antibody Information

### Recommended dilutions:

WB 1:500 - 1:2000 IHC 1:50  
- 1:100 IF 1:50 - 1:200

### Source:

Rabbit

### Isotype:

IgG

### Purification:

Affinity purification

### Immunogen:

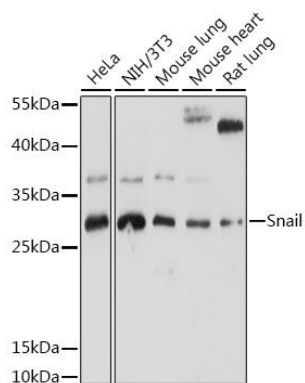
A synthetic peptide corresponding to a sequence within amino acids 200 to the C-terminus of human Snail (NP\_005976.2).

### Storage:

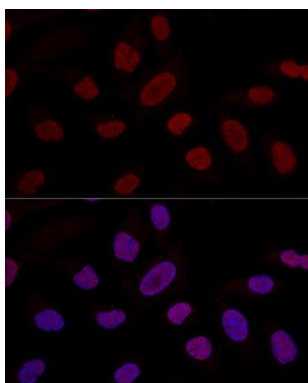
Store at -20°C. Avoid freeze / thaw cycles. Buffer: PBS with 0.02% sodium azide, 50% glycerol, pH7.3.

## Product Images

---



Western blot analysis of extracts of various cell lines, using Snail antibody (CAB12301) at 1:1000 dilution. Secondary antibody: HRP Goat Anti-Rabbit IgG (H+L) (CABS014) at 1:10000 dilution. Lysates/proteins: 25ug per lane. Blocking buffer: 3% nonfat dry milk in TBST. Detection: ECL Basic Kit (CABM00020). Exposure time: 3s.



Confocal immunofluorescence analysis of U2OS cells using Snail Polyclonal Antibody (CAB12301) at dilution of 1:100. Blue: DAPI for nuclear staining.