

CAB12303

Product Information

Size:

20uL, 50uL, 100uL, 200uL

Observed MW:

16kDa/34kDa/45kDa

Calculated MW:

15-27kDa/34-45kDa

Applications:

WB IHC IF

Reactivity:

Human, Mouse, Rat

Antibody Information

Recommended dilutions:

WB 1:500 - 1:2000 IHC 1:50
- 1:200 IF 1:50 - 1:200

Source:

Rabbit

Isotype:

IgG

Purification:

Affinity purification

Protein Background

This gene is a member of the PDGF/VEGF growth factor family. It encodes a heparin-binding protein, which exists as a disulfide-linked homodimer. This growth factor induces proliferation and migration of vascular endothelial cells, and is essential for both physiological and pathological angiogenesis. Disruption of this gene in mice resulted in abnormal embryonic blood vessel formation. This gene is upregulated in many known tumors and its expression is correlated with tumor stage and progression. Elevated levels of this protein are found in patients with POEMS syndrome, also known as Crow-Fukase syndrome. Allelic variants of this gene have been associated with microvascular complications of diabetes 1 (MVCD1) and atherosclerosis. Alternatively spliced transcript variants encoding different isoforms have been described. There is also evidence for alternative translation initiation from upstream non-AUG (CUG) codons resulting in additional isoforms. A recent study showed that a C-terminally extended isoform is produced by use of an alternative in-frame translation termination codon via a stop codon readthrough mechanism, and that this isoform is antiangiogenic. Expression of some isoforms derived from the AUG start codon is regulated by a small upstream open reading frame, which is located within an internal ribosome entry site.

Immunogen information

Gene ID:

7422

Uniprot

P15692

Synonyms:

VEGFA; MVCD1; VEGF; VPF; L VEGFA; VEGF A

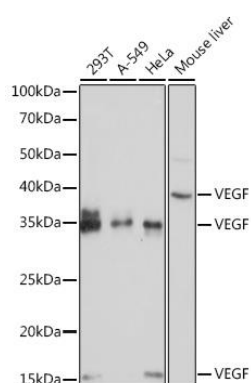
Immunogen:

Recombinant fusion protein containing a sequence corresponding to amino acids 27-126AA of human VEGF (NP_001165099.1).

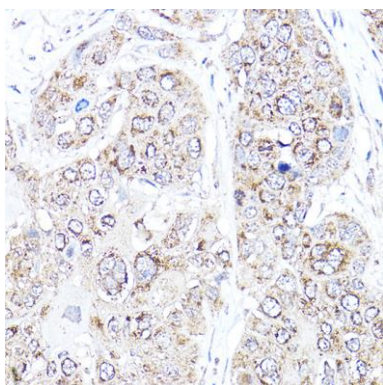
Storage:

Store at -20°C. Avoid freeze / thaw cycles. Buffer: PBS with 0.02% sodium azide, 50% glycerol, pH7.3.

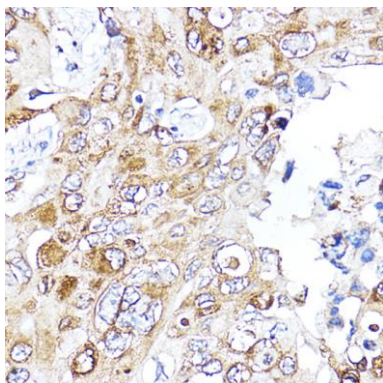
Product Images



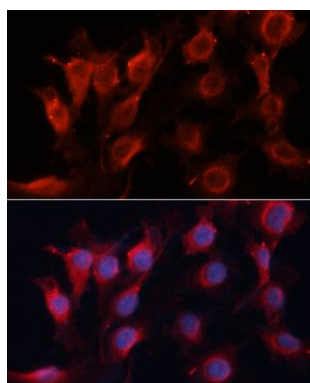
Western blot analysis of extracts of various cell lines, using VEGF antibody (CAB12303) at 1:1000 dilution. Secondary antibody: HRP Goat Anti-Rabbit IgG (H+L) (CABS014) at 1:10000 dilution. Lysates/proteins: 25ug per lane. Blocking buffer: 3% nonfat dry milk in TBST. Detection: ECL Basic Kit (CABM00020). Exposure time: 5s.



Immunohistochemistry of paraffin-embedded Human esophagus cancer using VEGF antibody (CAB12303) at dilution of 1:100 (40x lens).



Immunohistochemistry of paraffin-embedded Human lung cancer using VEGF antibody (CAB12303) at dilution of 1:100 (40x lens).



Immunofluorescence analysis of HUVEC cells using VEGFA antibody (CAB12303) at dilution of 1:100 (40x lens). Blue: DAPI for nuclear staining.