

RAB7 Rabbit Monoclonal Antibody



CAB12308

Product Information

Size:

20uL, 50uL, 100uL, 200uL

Observed MW:

23KDa

Calculated MW:

23kDa

Applications:

WB IF

Reactivity:

Human, Mouse, Rat

Protein Background

RAB family members are small, RAS-related GTP-binding proteins that are important regulators of vesicular transport. Each RAB protein targets multiple proteins that act in exocytic / endocytic pathways. This gene encodes a RAB family member that regulates vesicle traffic in the late endosomes and also from late endosomes to lysosomes. This encoded protein is also involved in the cellular vacuolation of the VacA cytotoxin of *Helicobacter pylori*. Mutations at highly conserved amino acid residues in this gene have caused some forms of Charcot-Marie-Tooth (CMT) type 2 neuropathies. [provided by RefSeq, Jul 2008]

Immunogen information

Gene ID:

7879

Uniprot

P51149

Synonyms:

PRO2706; RAB7

Antibody Information

Recommended dilutions:

WB 1:500 - 1:2000 IF 1:50 - 1:200

Source:

Rabbit

Isotype:

IgG

Purification:

Affinity purification

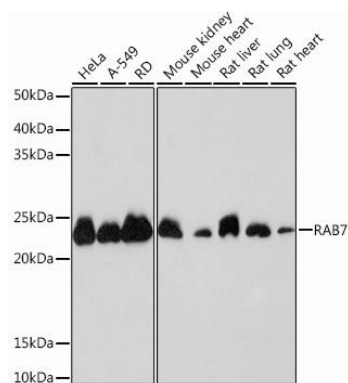
Immunogen:

A synthesized peptide derived from human RAB7

Storage:

Store at -20°C. Avoid freeze / thaw cycles. Buffer: PBS with 0.02% sodium azide, 0.05% BSA, 50% glycerol, pH7.3.

Product Images



Western blot - RAB7 Rabbit mAb (CAB12308)