

BST2 Rabbit Polyclonal Antibody



CAB12315

Product Information

Size:

20uL, 50uL, 100uL, 200uL

Observed MW:

35-40kDa

Calculated MW:

18kDa/19kDa

Applications:

WB IF

Reactivity:

Human, Mouse

Protein Background

Bone marrow stromal cells are involved in the growth and development of B-cells. The specific function of the protein encoded by the bone marrow stromal cell antigen 2 is undetermined; however, this protein may play a role in pre-B-cell growth and in rheumatoid arthritis.

Immunogen information

Gene ID:

684

Uniprot

Q10589

Synonyms:

BST2; CD317; TETHERIN

Antibody Information

Recommended dilutions:

WB 1:500 - 1:2000 IF 1:50 - 1:200

Source:

Rabbit

Isotype:

IgG

Purification:

Affinity purification

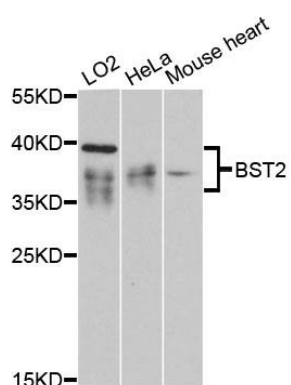
Immunogen:

Recombinant fusion protein containing a sequence corresponding to amino acids 49-161 of human BST2 (NP_004326.1).

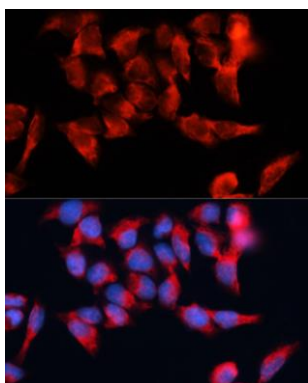
Storage:

Store at -20°C. Avoid freeze / thaw cycles. Buffer: PBS with 0.02% sodium azide, 50% glycerol, pH7.3.

Product Images



Western blot analysis of extracts of various cell lines, using BST2 antibody (CAB12315) at 1:3000 dilution. Secondary antibody: HRP Goat Anti-Rabbit IgG (H+L) (CABS014) at 1:10000 dilution. Lysates/proteins: 25ug per lane. Blocking buffer: 3% nonfat dry milk in TBST. Detection: ECL Basic Kit (CABM00020). Exposure time: 90s.



Immunofluorescence analysis of HeLa cells using BST2 antibody (CAB12315) at dilution of 1:100. Blue: DAPI for nuclear staining.