

PTPRA Rabbit Polyclonal Antibody



CAB12318

Product Information

Size:

20uL, 50uL, 100uL, 200uL

Observed MW:

145kDa/160kDa

Calculated MW:

89kDa/90kDa

Applications:

WB

Reactivity:

Mouse, Rat

Antibody Information

Recommended dilutions:

WB 1:500 - 1:2000

Source:

Rabbit

Isotype:

IgG

Purification:

Affinity purification

Protein Background

The protein encoded by this gene is a member of the protein tyrosine phosphatase (PTP) family. PTPs are known to be signaling molecules that regulate a variety of cellular processes including cell growth, differentiation, mitotic cycle, and oncogenic transformation. This PTP contains an extracellular domain, a single transmembrane segment and two tandem intracytoplasmic catalytic domains, and thus represents a receptor-type PTP. This PTP has been shown to dephosphorylate and activate Src family tyrosine kinases, and is implicated in the regulation of integrin signaling, cell adhesion and proliferation. Three alternatively spliced variants of this gene, which encode two distinct isoforms, have been reported.

Immunogen information

Gene ID:

5786

Uniprot

P18433

Synonyms:

PTPRA; HEPTP; HLPR; HPTPA; HPTPalpha; LRP; PTPA; PTPRL2; R-PTP-alpha; RPTPA

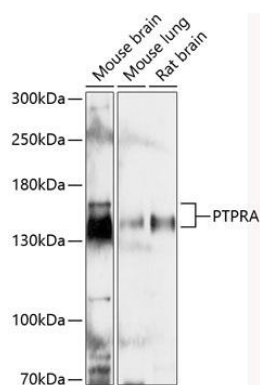
Immunogen:

Recombinant fusion protein containing a sequence corresponding to amino acids 529-793 of human PTPRA (NP_543031.1).

Storage:

Store at -20°C. Avoid freeze / thaw cycles. Buffer: PBS with 0.02% sodium azide, 50% glycerol, pH7.3.

Product Images



Western blot analysis of extracts of various cell lines, using PTPRA antibody (CAB12318) at 1:3000 dilution. Secondary antibody: HRP Goat Anti-Rabbit IgG (H+L) (CABS014) at 1:10000 dilution. Lysates/proteins: 25ug per lane. Blocking buffer: 3% nonfat dry milk in TBST. Detection: ECL Basic Kit (CABM00020). Exposure time: 5s.