

MAP1LC3A Rabbit Monoclonal Antibody



CAB12319

Product Information

Size:

20uL, 50uL, 100uL, 200uL

Observed MW:

16kDa

Calculated MW:

16kDa

Applications:

WB IHC

Reactivity:

Human, Mouse, Rat

Protein Background

MAP1A and MAP1B are microtubule-associated proteins which mediate the physical interactions between microtubules and components of the cytoskeleton. MAP1A and MAP1B each consist of a heavy chain subunit and multiple light chain subunits. The protein encoded by this gene is one of the light chain subunits and can associate with either MAP1A or MAP1B. Two transcript variants encoding different isoforms have been found for this gene. The expression of variant 1 is suppressed in many tumor cell lines, suggesting that may be involved in carcinogenesis. [provided by RefSeq, Feb 2012]

Immunogen information

Gene ID:

84557

Uniprot

Q9H492

Synonyms:

ATG8E; LC3; LC3A; MAP1ALC3; MAP1BLC3

Antibody Information

Recommended dilutions:

WB 1:500 - 1:2000 IHC

1:50 - 1:200

Source:

Rabbit

Isotype:

IgG

Purification:

Affinity purification

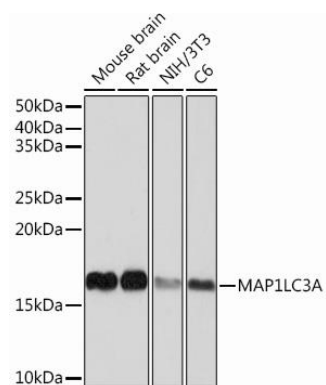
Immunogen:

A synthesized peptide derived from human MAP1LC3A

Storage:

Store at -20°C. Avoid freeze / thaw cycles. Buffer: PBS with 0.02% sodium azide, 0.05% BSA, 50% glycerol, pH7.3.

Product Images



Western blot - MAP1LC3A Rabbit mAb (CAB12319)