

# LGR5/GPR49 Rabbit Monoclonal Antibody



CAB12327

---

## Product Information

### Size:

20uL, 50uL, 100uL, 200uL

### Observed MW:

110KDa

### Calculated MW:

100kDa

### Applications:

WB IHC

### Reactivity:

Human, Mouse, Rat

## Protein Background

The protein encoded by this gene is a leucine-rich repeat-containing receptor (LGR) and member of the G protein-coupled, 7-transmembrane receptor (GPCR) superfamily. The encoded protein is a receptor for R-spondins and is involved in the canonical Wnt signaling pathway. This protein plays a role in the formation and maintenance of adult intestinal stem cells during postembryonic development. Several transcript variants encoding different isoforms have been found for this gene. [provided by RefSeq, Sep 2015]

## Immunogen information

### Gene ID:

8549

### Uniprot

O75473

### Synonyms:

FEX; GPR49; GPR67; GRP49; HG38

## Antibody Information

### Recommended dilutions:

WB 1:500 - 1:2000 IHC

1:50 - 1:200

### Source:

Rabbit

### Isotype:

IgG

### Purification:

Affinity purification

### Immunogen:

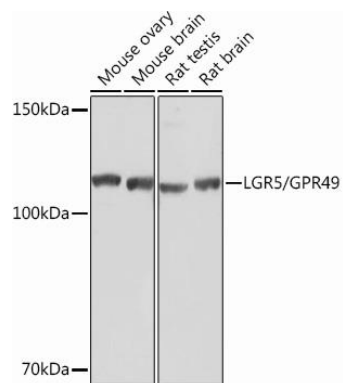
A synthesized peptide derived from human LGR5/GPR49

### Storage:

Store at -20°C. Avoid freeze / thaw cycles. Buffer: PBS with 0.02% sodium azide, 0.05% BSA, 50% glycerol, pH7.3.

## Product Images

---



Western blot - LGR5/GPR49 Rabbit mAb (CAB12327)