

Dot1L/KMT4 Rabbit Monoclonal Antibody



CAB12329

Product Information

Size:

20uL, 50uL, 100uL, 200uL

Observed MW:

170kDa

Calculated MW:

185kDa

Applications:

WB IP

Reactivity:

Human, Mouse

Protein Background

The protein encoded by this gene is a histone methyltransferase that methylates lysine-79 of histone H3. It is inactive against free core histones, but shows significant histone methyltransferase activity against nucleosomes. [provided by RefSeq, Aug 2011]

Immunogen information

Gene ID:

84444

Uniprot

Q8TEK3

Synonyms:

DOT1; KMT4

Antibody Information

Recommended dilutions:

WB 1:500 - 1:2000 IP 1:50 - 1:200

Source:

Rabbit

Isotype:

IgG

Purification:

Affinity purification

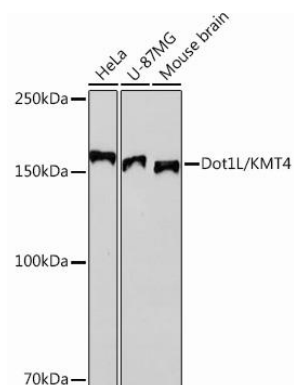
Immunogen:

A synthesized peptide derived from human Dot1L/KMT4

Storage:

Store at -20°C. Avoid freeze / thaw cycles. Buffer: PBS with 0.02% sodium azide, 0.05% BSA, 50% glycerol, pH7.3.

Product Images



Western blot - Dot1L/KMT4 Rabbit mAb (CAB12329)